



ANTI-CORROSION PACKAGE FOR PVC AND CPVC PROCESSING ENVIRONMENTS



PVC and CPVC. burned, degraded, baked onto feedscrews. Shutting down the process and pulling the feedscrew, tip and end cap. Cleaning off burned, degraded, baked-on material. Even repairing and re-chroming feedscrews. They're all things of the past for PVC and CPVC injection molders.

PVCSTAR is the injection molding package developed and perfected by SERVTEK for the PVC / CPVC molder. Our package of corrosive-resistant screw, smear-head tip and end cap eliminates all corrosive effects of PVC/CPVC attacking the base metal.

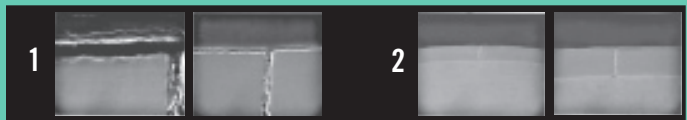
The feedscrew features a flexible space-age ceramic coating, replacing older double and triple chrome-plated feedscrews which eventually wear through from burning, cleaning and re-cleaning.

The enemy is the chlorine in the PVC, which attacks the substrate material. Eventually, this causes the substrate to fail. Increasing numbers of imperfections on the surface exposed to the PVC results in shorter time between cleanings. The reason for older, multiple plating was simply to cover the chrome "imperfections" with more layers of plating. The more cleaning, the more wear through the chrome, the more imperfections exposed to the process. Re-chroming, repair and expense were the only alternatives.

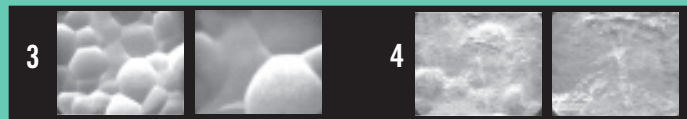
PVCSTAR IS SERVTEK'S CERAMIC COATING FOR CORROSION RESISTANCE AND DENSIFICATION OF HARD CHROME PLATING.

PVCSTAR's "perfect" ceramic coating resists the release of corrosive chlorides and acids as part of the process – and, thus, resists all corrosion effects. PVCSTAR ceramic coated feedscrew packages have been processing problem-free in the field for many years. Call today and let us share our smooth-running experience with you.

THE PVCSTAR SOLUTION



1. PVCSTAR ceramic coating completely fills micro-cracks of chrome plate with chromium oxide (Cr2O3)
 - a. Prevents blistering of plating caused by penetration of chlorides through the chrome plate.
 - b. Stops plastic (polymer) from wedging into micro-cracks, making cleaning of components easier and faster.
 - c. Lowers friction
2. Chlorides or other acids do not attack chromium oxide (Cr2O3)



3. The process chemically bonds the Cr2O3 to both the chrome plate and the substrate, increasing the bond strength of the chrome plate to the substrate.
4. Life increases
 - a. Laboratory corrosion (salt fog) tests prove it.
 - 100 hours , plain chrome plate average life
 - 2,000+ hours ceramic-coated densified chrome plate average life.
 - b. Similarly coated pump rotors used as drilling motors in oil well drilling with calcium chloride (CaCl) also offer substrate wear-resistance:
 - 200 hours ceramic coated densified chrome plate average life.



SERVTEK
SERVICES

call: 1-888-439-2491 • fax: 513-536-2442
4165 Half Acre Road • Batavia, Ohio 45103
e-mail: www.service@servtek.com