

Technical Specifications

I78 Hybrid Frame

38/44/50 - 120mm

| Injection Unit Specifications | English | | | | | Metric | | |
|-----------------------------------|----------------------|--------|--------|--------|----------------------|--------|--------|--------|
| | | A | B | C | | A | B | C |
| Injection Capacity, Max GPPS | oz | 38 | 44 | 50 | gm | 1,077 | 1,247 | 1,417 |
| Theoretical Disp | in ³ | 68.9 | 80.1 | 91.5 | cm ³ | 1,129 | 1,313 | 1,500 |
| Injection Performance | | | | | | | | |
| Max Pressure | psi | 34,800 | 30,000 | 27,500 | bar | 2,400 | 2,069 | 1,897 |
| Max Rate | in ³ /sec | 153 | 175 | 200 | cm ³ /sec | 2,500 | 2,868 | 3,278 |
| Max Injection Speed | in/sec | 30 | 30 | 30 | mm/sec | 762 | 762 | 762 |
| Max Pack Pressure | psi | 27,840 | 24,000 | 22,000 | bar | 1,920 | 1,655 | 1,518 |
| Max Pull Back Force | lbf | 22,000 | 22,000 | 22,000 | N | 97,860 | 97,860 | 97,860 |
| Plunger Stroke | in | 13.39 | 13.39 | 13.39 | mm | 340 | 340 | 340 |
| Plunger Diameter | in | 2.56 | 2.76 | 2.95 | mm | 65 | 70 | 75 |
| Extruder L/d Ratio - 120mm* | | | | | | 25 | | |
| Extruder RPM - Low Torque | rpm | | | | | 160 | | |
| Extruder RPM - High Torque | rpm | | | | | 130 | | |
| Barrel Heat | | | | | | | | |
| No. of Pyrometers (barrel/nozzle) | | | | | | 11/1 | | |
| Total Heat Capacity | kw | | | | | 148.3 | | |
| Sled Pull in Force | ton | | 12 | | tonf | | 10.8 | |

| Clamp Specifications | | | | | | | | |
|-------------------------------|--------|--|-------------|--|--------|-------|---------------|--|
| Tonnage | ton | | 1,125 | | tonf | | 1023 | |
| Maximum Daylight | in | | 103.9 | | mm | | 2,640 | |
| Max/Min Mold Height | in | | 51.9/15.7 | | mm | | 1,320/400 | |
| Max Mold Weight | lb | | 63,235 | | kg | | 28,685 | |
| Max Clamp Stroke | in | | 51.9 | | mm | 1,320 | 1,000 | |
| Euromap Dry Cycle Time | sec | | | | | <4.2 | | |
| Platen Size | in | | 81.5 × 70.9 | | mm | | 2,070 × 1,800 | |
| Tie Bar Spacing | in | | 61.0 × 47.2 | | mm | | 1,550 × 1,200 | |
| Tie Rod Diameter | in | | 8.6 | | mm | | 220 | |
| Ejector Stroke | in | | 10.8 | | mm | | 275 | |
| Max Ejector Force (hyd std)** | ton | | 16.9 | | tonf | | 15.3 | |
| Max Eject Speed** | in/sec | | 20 | | mm/sec | | 510 | |

| Machine Specifications*** | | | | | | | | |
|------------------------------|----|--|------------------------|--|----|--|----------------------|--|
| Length, see note | in | | 516.7 | | mm | | 13,124 | |
| Width | in | | 124.2 | | mm | | 3,155 | |
| Height | in | | 112.9 | | mm | | 2,868 | |
| Centerline Height | in | | 58.3 | | mm | | 1,481 | |
| Shipping Weight (machine) | lb | | 132,280/29,000/161,280 | | kg | | 60,001/13,154/73,155 | |
| Shipping Weight (power unit) | lb | | 3,800 | | kg | | 1,724 | |

| Electrical Specifications*** | | | | | | | | |
|--|--|--|--|--|------|--|--|--|
| Input Power Source 460 VAC ± 10% 3 Ph 60 Hz | | | | | Std. | | | |
| Power Supply Capacity kVA | | | | | 217 | | | |

| Machine Requirements | | | | | | | | |
|----------------------|--|--|--|--|-----------------|--|--|--|
| Water | | | | | 15 gpm @ 85 F | | | |
| Air | | | | | 80 psi @ 20 cfm | | | |

*Note: 70mm 30:1 L/d extruder also available (consult factory)

**Note: Higher eject force and speed available (consult factory)

***Note: All machine dimensions and specifications are subject to change. Values are for reference only.

Technical Specifications

I45 Frame

72/96/130 - 70mm

| | | English | | | | Metric | | |
|--------------------------------------|-----------------|---|---|---|----------------------|---|---|---|
| Injection Unit Specifications | | A | B | C | | A | B | C |
| Injection Capacity, Max GPPS* | oz | 72 | 96 | 130 | gm | 2,041 | 2,722 | 3,685 |
| Theoretical Disp | in ³ | 134.1 | 178.6 | 243.1 | cm ³ | 2,198 | 2,927 | 3,984 |
| Injection Performance | | | | | | | | |
| Max Pressure @ Rate | | 30,000 psi @ 18.4 in ³ /sec | 23,200 psi @ 24.5 in ³ /sec | 17,000 psi @ 36.9 in ³ /sec | bar | 2,069 bar @ 302 cm ³ /sec | 1,600 bar @ 401 cm ³ /sec | 1,172 bar @ 605 cm ³ /sec |
| Max Rate @ Pressure | | 48.5 in ³ /sec @ 15,200 psi | 64.6 in ³ /sec @ 11,440 psi | 87.9 in ³ /sec @ 8,400 psi | cm ³ /sec | 795 cm ³ /sec @ 1,048 bar | 1,059 cm ³ /sec @ 789 bar | 1,440 cm ³ /sec @ 580 bar |
| Max Injection Speed | in/sec | 14.75 | 14.75 | 14.75 | mm/sec | 375 | 375 | 375 |
| Max Pack Pressure | psi | 30,000 | 23,200 | 17,000 | bar | 2,069 | 1,600 | 1,172 |
| Max Pull Back Force | lbf | 25,000 | 25,000 | 25,000 | N | 111,205 | 111,205 | 111,205 |
| Plunger Stroke | in | 40.75 | 40.75 | 40.75 | mm | 1,035 | 1,035 | 1,035 |
| Plunger Diameter | in | 2.04 | 2.36 | 2.76 | mm | 52 | 60 | 70 |
| Extruder L/d Ratio - 70mm | | | | | | 30 | | |
| Extruder RPM - Low Torque | rpm | | | | | 265 | | |
| Extruder RPM - High Torque | rpm | | | | | 265 | | |
| Barrel Heat | | | | | | | | |
| No. of Pyrometers (barrel/nozzle) | | | | | | 10/1 | | |
| Total Heat Capacity | kw | | | | | 65.26 | | |
| Sled Pull in Force | ton | | 4.1 | | tonf | | 3.7 | |

| Clamp Specifications | | | | | |
|-----------------------------|--------|-------------|--|--------|---------------|
| Tonnage | ton | 1,125 | | tonf | 1,023 |
| Maximum Daylight | in | 103.9 | | mm | 2,640 |
| Max/Min Mold Height | in | 51.9/15.7 | | mm | 1,320/400 |
| Max Mold Weight | lb | 63,235 | | kg | 28,685 |
| Max Clamp Stroke | in | 51.9 | | mm | 1,320 |
| Euromap Dry Cycle Time | sec | | | | <4.2 |
| Platen Size | in | 81.5 × 70.9 | | mm | 2,070 × 1,800 |
| Tie Bar Spacing | in | 61.0 × 47.2 | | mm | 1,550 × 1,200 |
| Tie Rod Diameter | in | 8.6 | | mm | 220 |
| Ejector Stroke | in | 10.8 | | mm | 275 |
| Max Ejector Force** | ton | 16.9 | | tonf | 15.3 |
| Max Eject Speed** | in/sec | 20 | | mm/sec | 510 |

| Machine Specifications*** | | | | | |
|----------------------------------|----|------------------------|--|----|---------------------|
| Length, see note | in | 458.1 | | mm | 11,636 |
| Width | in | 123.9 | | mm | 3,147 |
| Height | in | 112.9 | | mm | 2,868 |
| Centerline Height | in | 58.3 | | mm | 1,481 |
| Shipping Weight (machine) | lb | 132,280/21,000/153,280 | | kg | 60,001/9,525/69,530 |

| Electrical Specifications*** | | | |
|--|--|--|------|
| Input Power Source 460 VAC ± 10% 3 Ph 60 Hz | | | Std. |
| Power Supply Capacity kVA | | | 217 |

| Machine Requirements | | | |
|-----------------------------|--|--|-----------------|
| Water | | | 6 gpm @ 50 psi |
| Air | | | 80 psi @ 20 cfm |

*Note: Other capacities available. Please Consult Factory.

**Note: Higher eject force and speed available. Please Consult Factory.

***Note: All machine dimensions and specifications are subject to change. Values are for reference only.

Technical Specifications

I49 Frame

74/98/135/195 - 120mm

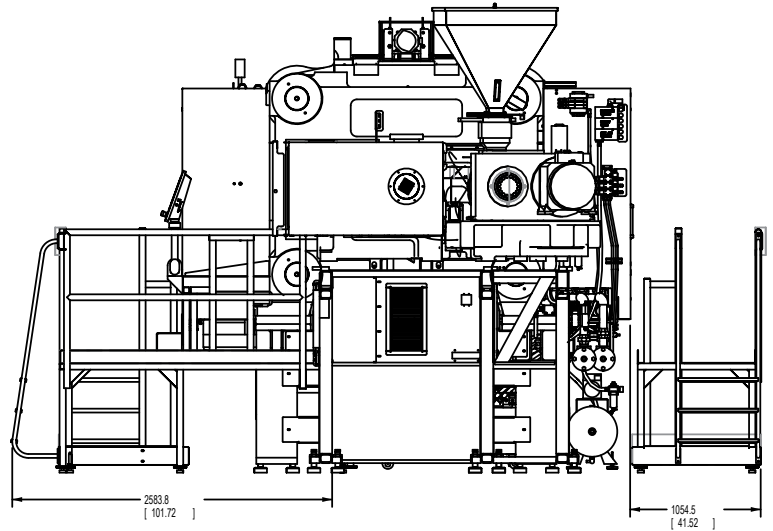
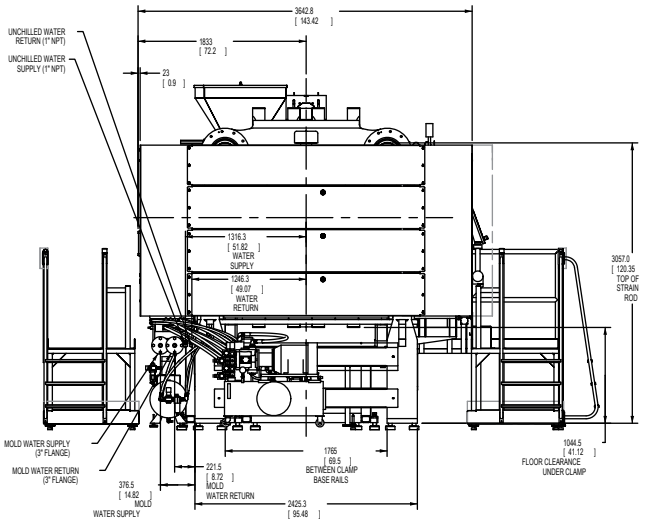
| English | | | | | | Metric | | | | | |
|--|-----------------|--|--|---|---|-----------------|---|---|---|---|--|
| Injection Unit Specifications | | | | | | | | | | | |
| Injection Capacity, Max GPPS* | oz | 74 | 98 | 135 | 195 | gm | 2,098 | 2,778 | 3,827 | 5,528 | |
| Theoretical Disp | in ³ | 133.2 | 178.3 | 243.8 | 357.0 | cm ³ | 2,183 | 2,922 | 3,995 | 5,850 | |
| Injection Performance | | | | | | | | | | | |
| Max Pressure @ Rate | | 35,000 psi @ 31 in ³ /sec | 30,000 psi @ 41 in ³ /sec | 23,200 psi @ 56 in ³ /sec | 17,763 psi @ 73 in ³ /sec | | 2,414 bar @ 508 cm ³ / sec | 2,069 bar @ 672 cm ³ / sec | 1,600 bar @ 917 cm ³ / sec | 1,225 bar @ 1,196 cm ³ / sec | |
| Max Rate @ Pressure | | 62 in ³ /sec @ 24,726 psi | 82 in ³ /sec @ 18,752 psi | 112 in ³ /sec @ 13,645 psi | 146 in ³ /sec @ 10,447psi | | 1,105 cm ³ / sec @ 1,705 bar | 1,343 cm ³ / sec @ 1,281 bar | 1,834 cm ³ / sec @ 941 bar | 2,392 cm ³ / sec @ 720 bar | |
| Max Injection Speed | in/sec | 19 | 19 | 19 | 19 | mm/sec | 482 | 482 | 482 | 482 | |
| Max Pack Pressure | psi | 35,000 | 30,000 | 23,200 | 17,763 | bar | 2,414 | 2,069 | 1,600 | 1,225 | |
| Max Pull Back Force | lbf | 25,000 | 25,000 | 25,000 | 25,000 | N | 111,205 | 111,205 | 111,205 | 111,205 | |
| Plunger Stroke | in | 40.75 | 40.75 | 40.75 | 40.75 | mm | 1,035 | 1,035 | 1,035 | 1,035 | |
| Plunger Diameter | in | 2.04 | 2.36 | 2.76 | 3.34 | mm | 52 | 60 | 70 | 85 | |
| Extruder L/d Ratio - 120mm* | | | | | | | 25 | | | | |
| Extruder RPM - Low Torque | rpm | | | | | | 160 | | | | |
| Extruder RPM - High Torque | rpm | | | | | | 130 | | | | |
| Barrel Heat | | | | | | | | | | | |
| No. of Pyrometers (barrel/nozzle) | | | | | | | 10/1 | | | | |
| Total Heat Capacity | kw | | | | | | 142.75 | | | | |
| Sled Pull in Force | ton | 4.1 | | | | tonf | 3.7 | | | | |
| Clamp Specifications | | | | | | | | | | | |
| Tonnage | ton | 1,125 | | | | tonf | 1,023 | | | | |
| Maximum Daylight | in | 103.9 | | | | mm | 2,640 | | | | |
| Max/Min Mold Height | in | 51.9/15.7 | | | | mm | 1,320/400 | | | | |
| Max Mold Weight | lb | 63,235 | | | | kg | 28,685 | | | | |
| Max Clamp Stroke | in | 51.9 | | | | mm | 1,320 | | | | |
| Euromap Dry Cycle Time | sec | | | | | <4.2 | | | | | |
| Platen Size | in | 81.5 × 70.9 | | | | mm | 2,070 × 1,800 | | | | |
| Tie Bar Spacing | in | 61.0 × 47.2 | | | | mm | 1,550 × 1,200 | | | | |
| Tie Rod Diameter | in | 8.6 | | | | mm | 220 | | | | |
| Ejector Stroke | in | 10.8 | | | | mm | 275 | | | | |
| Max Ejector Force** | ton | 19.7 | | | | tonf | 17.9 | | | | |
| Max Eject Speed** | in/sec | 8.9 | | | | mm/sec | 225 | | | | |
| Machine Specifications*** | | | | | | | | | | | |
| Length, see note | in | 458.1 | | | | mm | 11,636 | | | | |
| Width | in | 123.9 | | | | mm | 3,147 | | | | |
| Height | in | 112.9 | | | | mm | 2,868 | | | | |
| Centerline Height | in | 58.3 | | | | mm | 1,481 | | | | |
| Shipping Weight (machine) | lb | 132,280/21,000/153,280 | | | | kg | 60,001/9,525/69,530 | | | | |
| Electrical Specifications*** | | | | | | | | | | | |
| Input Power Source 460 VAC ± 10% 3 Ph 60 Hz | | | | | | | Std. | | | | |
| Power Supply Capacity kVA | | | | | | | 217 | | | | |
| Machine Requirements | | | | | | | | | | | |
| Water | | | | | | | 6 gpm @ 80 psi | | | | |
| Air | | | | | | | 80 psi @ 20 cfm | | | | |

*Note: Other capacities available. Please Consult Factory.

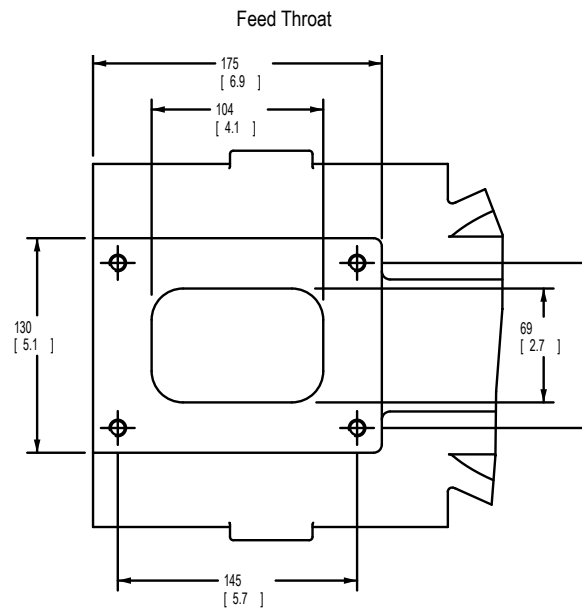
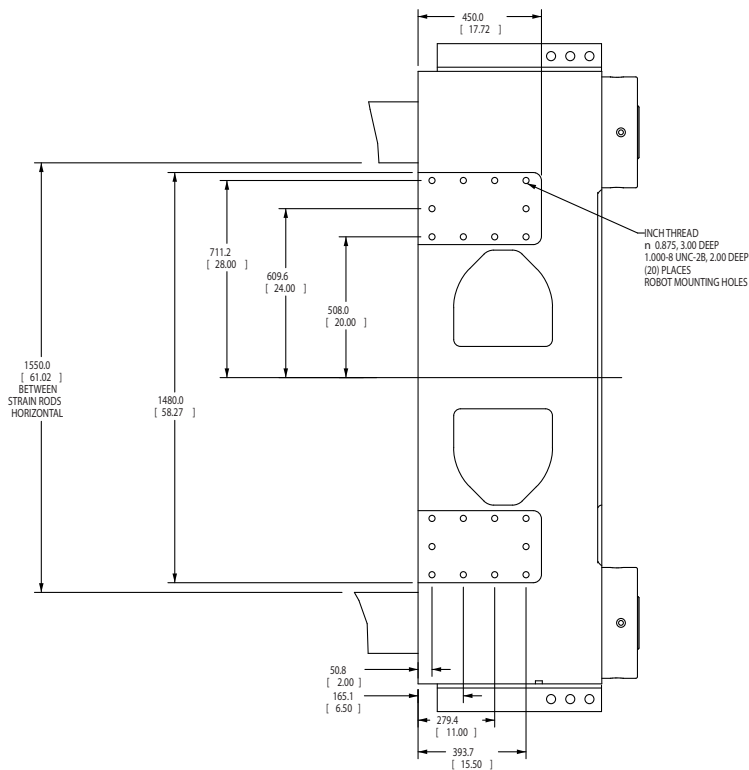
**Note: Higher eject force and speed available. Please Consult Factory.

***Note: All machine dimensions and specifications are subject to change. Values are for reference only.

1125 Templates



NOTE:
Platforms are optional and not included with the machine



Feed throat dimensions can change based on injection frame.
Consult factory for specific details.

