

MAXIMA MM 310 WP

CLAMP UNIT SPECIFICATIONS

	English		Metric	
Clamp Force	tons	310	kN	2750
Clamp Opening Force	tons	14	kN	124
Clamp Stroke	in.	41.7	mm	1060
Clamp Speed Open	in./sec.	45	mm/sec.	1143
Clamp Speed Close	in./sec.	45	mm/sec.	1143
Maximum Daylight	in.	49.6	mm	1260
Min/Max Mold Thickness	in.	7.9 / 25.6	mm	200 / 650
Maximum Mold Weight	lbs.	8,295	kgs	3762
Platen Size (H x V)	in.	47.0 x 47.0	mm	1195 x 940
Distance Between Tie Rods (H x V)	in.	36.0 x 26.0	mm	915 x 660
Tie Rod Diameter	in.	4.53	mm	115
Ejector Stroke (Max)	in.	6.3	mm	160
Ejector Force @2000 psi	tons	8.0	kN	71

MACHINE SPECIFICATIONS

	English		Metric	
Overall Length (w/ 3470 IU)	in.	259.4	mm	6588
Overall Width	in.	88.6	mm	2251
Overall Height	in.	87.1	mm	2300
Shipping Weight (without oil)	lbs.	30,795	kg	13970
Hydraulic System Pressure	psi	2,950	bar	203
Variable Volume Pump Capacity	gpm	66	L/min	250
Fixed Pump Capacity	gpm	15	L/min	57
Injection and Extruder	gpm	66	L/min	250
Eject and Core Pull	gpm	15	L/min	57
Electric Motor	hp	60	kw	45
Total Oil Reservoir Capacity	gal	174	L	659
Heat Exchanger Water @85° F	gpm	15	L/min	56.7



INJECTION UNIT SPECIFICATIONS

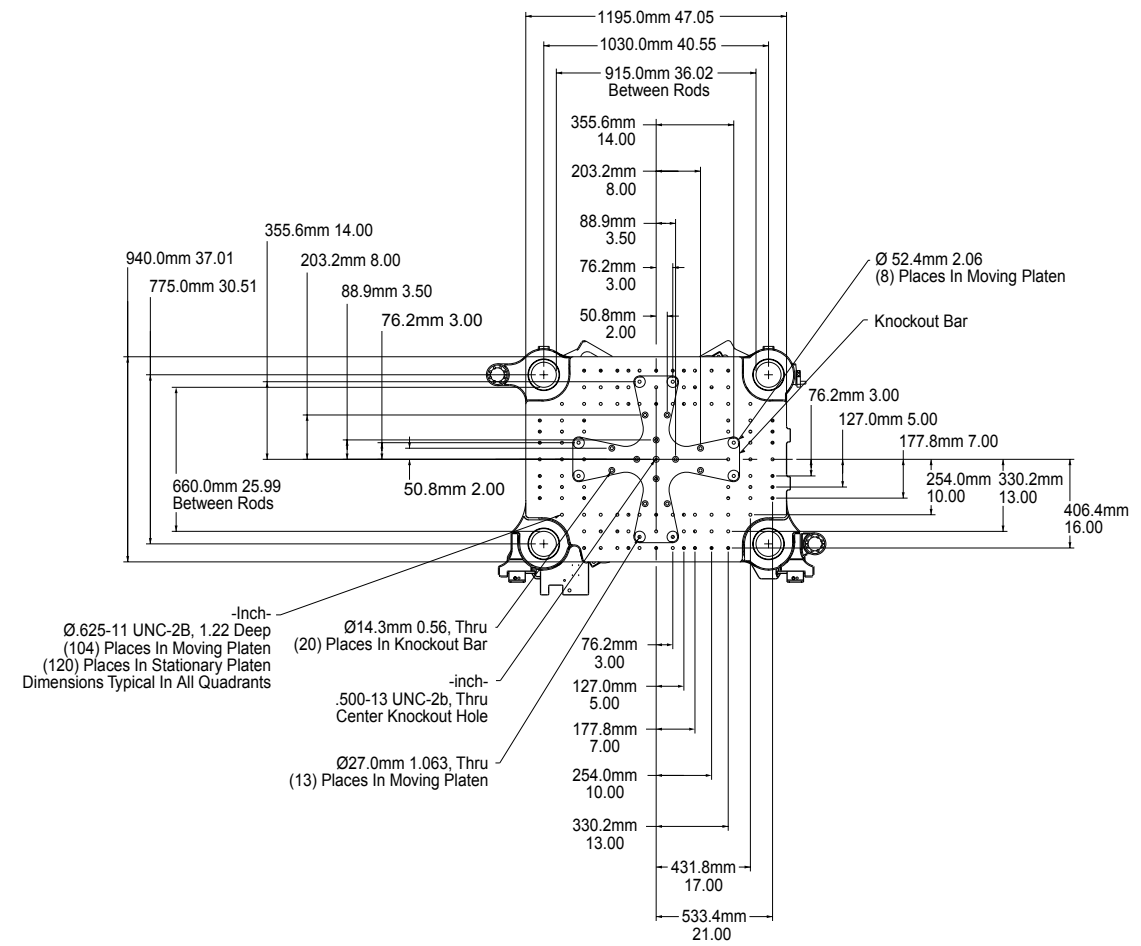
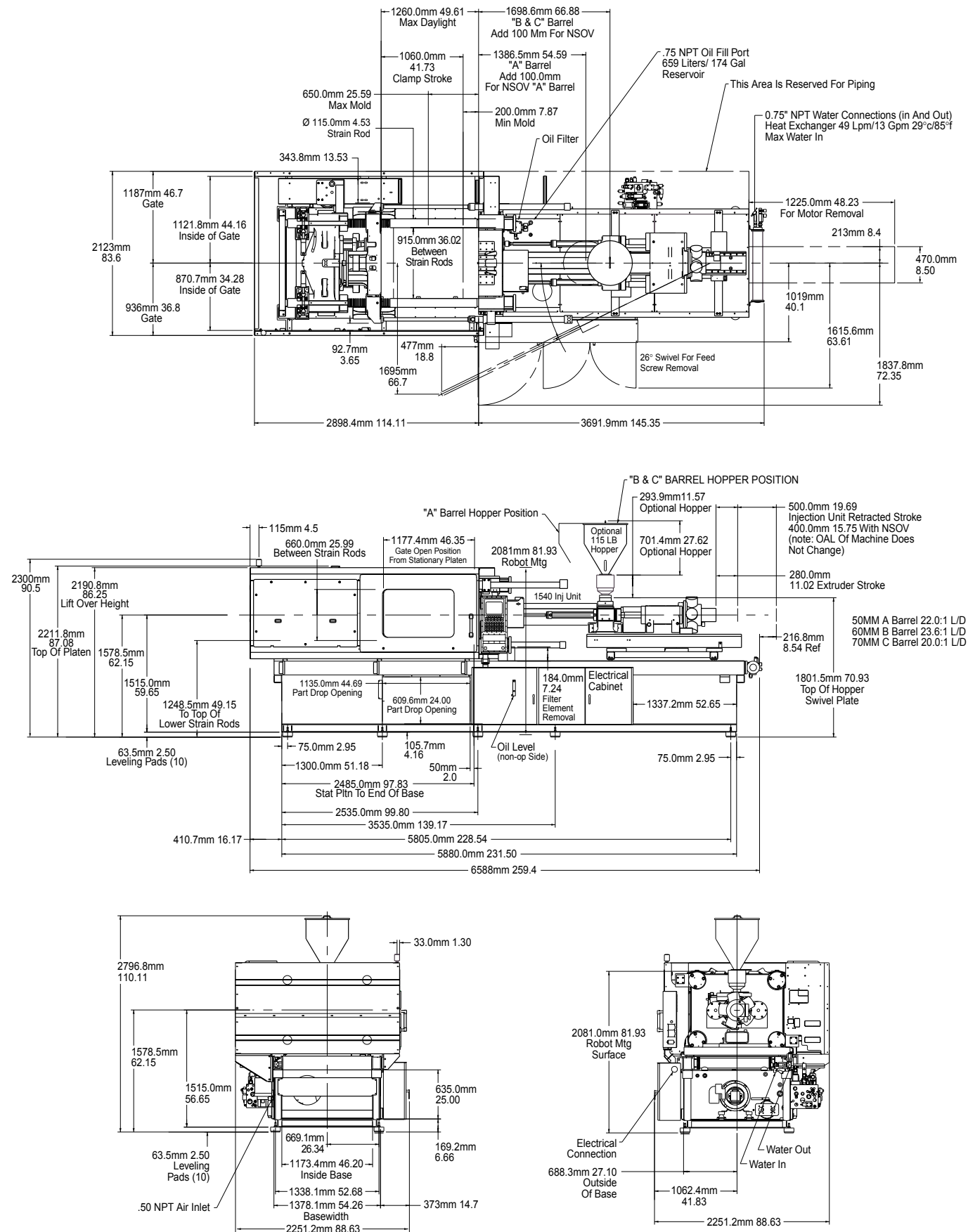
	English	A	B	C	Metric	A	B	C
Injection Capacity Maximum								
G.P. Styrene (theoretical)	oz	12	15	22	g	340	425	624
Displacement	in ³	23.3	28.8	41.4	cm ³	382	471	679
Injection Pressure Maximum	psi	32,600	29,800	20,700	bar	2248	2055	1428
Injection Rate - Standard	in ³ /sec	17	21	31	cm ³ /sec	279	344	508
Injection Rate - MAXIMA PLUS	in ³ /sec	48	59	86	cm ³ /sec	786	966	1409
Screw Stroke	in	9.4	9.4	9.4	mm	240	240	240
Screw Diameter	in	1.77	1.97	2.36	mm	45	50	60
Screw L/D		22.0	24.2	20.0		22.0	24.2	22.0
Low Torque Screw Speed Maximum	rpm	449	404	337	rpm	449	404	337
Low Torque at Screw	in-lb	8,900	8,900	8,900	Nm	1005	1005	1005
	@ psi	2,900	2,900	2,900	@ bar	200	200	200
Recovery Rate (GP Styrene) calculated	oz/sec	1.6	2.0	2.7	gr/sec	46	57	76
High Torque Screw Speed Maximum	rpm	449	404	337	rpm	449	404	337
High Torque at Screw	in-lb	13,300	13,300	13,300	Nm	1502	1502	1502
	@ psi	2,900	2,900	2,900	@ bar	200	200	200
Recovery Rate (GP Styrene) calculated	oz/sec	1.6	2.0	2.7	gr/sec	46	57	76
Number of Pyrometers (barrel/nozzle)		4 / 1	4 / 1	4 / 1		4 / 1	4 / 1	4 / 1
Total Heat Capacity	kW	14.8	18.1	18.1	kW	14.8	18.1	18.1

INJECTION UNIT SPECIFICATIONS

	English	A	B	C	Metric	A	B	C
Injection Capacity Maximum								
G.P. Styrene (theoretical)	oz	18	26	36	g	510	737	1021
Displacement	in ³	33.5	48.3	65.8	cm ³	550	792	1078
Injection Pressure Maximum	psi	32,400	28,100	20,600	bar	2234	1938	1421
Injection Rate - Standard	in ³ /sec	15	22	31	cm ³ /sec	246	361	508
Injection Rate - MAXIMA PLUS	in ³ /sec	59	86	117	cm ³ /sec	966	1409	1917
Screw Stroke	in	11.0	11.0	11.0	mm	280	280	280
Screw Diameter	in	1.97	2.36	2.76	mm	50	60	70
Screw L/D		22.0	23.6	20.0		22.0	23.6	22.0
Low Torque Screw Speed Maximum	rpm	404	337	289	rpm	404	337	289
Low Torque at Screw	in-lb	14,200	14,200	14,200	Nm	1603	1603	1603
	@ psi	2,900	2,900	2,900	@ bar	200	200	200
Recovery Rate (GP Styrene) calculated	oz/sec	2.0	2.7	3.2	gr/sec	57	76	90
High Torque Screw Speed Maximum	rpm	296	296	289	rpm	296	296	289
High Torque at Screw	in-lb	21,300	21,300	21,300	Nm	2405	2405	2405
	@ psi	2,900	2,900	2,900	@ bar	200	200	200
Recovery Rate (GP Styrene) calculated	oz/sec	1.5	2.4	3.2	gr/sec	42	67	90
Number of Pyrometers (barrel/nozzle)		4 / 1	4 / 1	4 / 1		4 / 1	4 / 1	4 / 1
Total Heat Capacity	kW	19.3	22.2	22.2	kW	19.3	22.2	22.2

INJECTION UNIT SPECIFICATIONS

	English	A	B	C	Metric	A	B	C
Injection Capacity Maximum								
G.P. Styrene (theoretical)	oz	30	41	54	g	851	1162	1531
Displacement	in ³	55.2	75.2	98.2	cm ³	905	1232	1609
Injection Pressure Maximum	psi	32,400	26,900	20,600	bar	2234	1855	1421
Injection Rate - Standard	in ³ /sec	21	29	37	cm ³ /sec	344	475	606
Injection Rate - MAXIMA PLUS	in ³ /sec	86	117	153	cm ³ /sec	1409	1917	2507
Screw Stroke	in	12.6	12.6	12.6	mm	320	320	320
Screw Diameter	in	2.36	2.76	3.15	mm	60	70	80
Screw L/D		22.0	22.9	20.0		22.0	22.9	22.0
Low Torque Screw Speed Maximum	rpm	337	289	253	rpm	337	289	253
Low Torque at Screw	in-lb	22,300	22,300	22,300	Nm	2518	2518	2518
	@ psi	2,900	2,900	2,900	@ bar	200	200	200
Recovery Rate (GP Styrene) calculated	oz/sec	2.7	3.2	4.0	gr/sec	76	90	115
High Torque Screw Speed Maximum	rpm	221	221	221	rpm	221	221	221
High Torque at Screw	in-lb	34,700	34,700	34,700	Nm	3918	3918	3918
	@ psi	2,900	2,900	2,900	@ bar	200	200	200
Recovery Rate (GP Styrene) calculated	oz/sec	1.8	2.4	3.5	gr/sec	50	69	100
Number of Pyrometers (barrel/nozzle)		4 / 1	4 / 1	4 / 1		4 / 1	4 / 1	4 / 1
Total Heat Capacity	kW	24.3	29.1	29.1	kW	24.3	29.1	29.1



MAXIMA MM 450

CLAMP UNIT SPECIFICATIONS

	English		Metric	
Clamp Force	tons	450	kN	4000
Clamp Opening Force	tons	20	kN	177
Clamp Stroke	in.	47.2	mm	1200
Clamp Speed Open	in./sec.	40	mm/sec.	1016
Clamp Speed Close	in./sec.	40	mm/sec.	1016
Maximum Daylight	in.	57.1	mm	1450
Min/Max Mold Thickness	in.	9.8 / 29.5	mm	250 / 750
Maximum Mold Weight	lbs.	12,425	kgs	5635
Platen Size (H x V)	in.	43.3 x 43.3	mm	1100 x 1100
Distance Between Tie Rods (H x V)	in.	32.3 x 32.3	mm	820 x 820
Tie Rod Diameter	in.	5.51	mm	140
Ejector Stroke (Max)	in.	7.9	mm	200
Ejector Force @2000 psi	tons	8.3	kN	73

MACHINE SPECIFICATIONS

	English		Metric	
Overall Length (w/ 3470 IU)	in.	272.2	mm	6913
Overall Width	in.	88.6	mm	2249
Overall Height	in.	114.8	mm	2917
Shipping Weight (without oil)	lbs.	40,050	kg	18170
Hydraulic System Pressure	psi	2,950	bar	203
Variable Volume Pump Capacity	gpm	65	L/min	246
Fixed Pump Capacity	gpm	36	L/min	136
Injection and Extruder	gpm	80	L/min	303
Eject and Core Pull	gpm	21	L/min	79
Electric Motor	hp	75	kw	56
Total Oil Reservoir Capacity	gal	190	L	719
Heat Exchanger Water @85° F	gpm	15	L/min	57



INJECTION UNIT SPECIFICATIONS

	English	A	B	C	Metric	A	B	C
Injection Capacity Maximum								
G.P. Styrene (theoretical)	oz	18	26	36	g	510	737	1021
Displacement	in ³	33.5	48.3	65.8	cm ³	550	792	1078
Injection Pressure Maximum	psi	32,400	28,100	20,600	bar	2234	1938	1421
Injection Rate - Standard	in ³ /sec	19	27	37	cm ³ /sec	311	442	606
Injection Rate - MAXIMA PLUS	in ³ /sec	59	86	117	cm ³ /sec	966	1409	1917
Screw Stroke	in	11.0	11.0	11.0	mm	280	280	280
Screw Diameter	in	1.97	2.36	2.76	mm	50	60	70
Screw L/D		22.0	23.6	20.0		22.0	23.6	22.0
Low Torque Screw Speed Maximum	rpm	404	337	289	rpm	404	337	289
Low Torque at Screw	in-lb	14,200	14,200	14,200	Nm	1603	1603	1603
	@ psi	2,900	2,900	2,900	@ bar	200	200	200
Recovery Rate (GP Styrene) calculated	oz/sec	2.0	2.7	3.2	gr/sec	57	76	90
High Torque Screw Speed Maximum	rpm	359	337	289	rpm	359	337	289
High Torque at Screw	in-lb	21,300	21,300	21,300	Nm	2405	2405	2405
	@ psi	2,900	2,900	2,900	@ bar	200	200	200
Recovery Rate (GP Styrene) calculated	oz/sec	1.8	2.7	3.2	gr/sec	51	76	90
Number of Pyrometers (barrel/nozzle)		4 / 1	4 / 1	4 / 1		4 / 1	4 / 1	4 / 1
Total Heat Capacity	kW	19.3	22.2	22.2	kW	19.3	22.2	22.2

INJECTION UNIT SPECIFICATIONS

	English	A	B	C	Metric	A	B	C
Injection Capacity Maximum								
G.P. Styrene (theoretical)	oz	30	41	54	g	851	1162	1531
Displacement	in ³	55.2	75.2	98.2	cm ³	905	1232	1609
Injection Pressure Maximum	psi	32,400	26,900	20,600	bar	2234	1855	1421
Injection Rate - Standard	in ³ /sec	21	29	37	cm ³ /sec	344	475	606
Injection Rate - MAXIMA PLUS	in ³ /sec	86	117	153	cm ³ /sec	1409	1917	2507
Screw Stroke	in	12.6	12.6	12.6	mm	320	320	320
Screw Diameter	in	2.36	2.76	3.15	mm	60	70	80
Screw L/D		22.0	22.9	20.0		22.0	22.9	22.0
Low Torque Screw Speed Maximum	rpm	337	289	253	rpm	337	289	253
Low Torque at Screw	in-lb	22,300	22,300	22,300	Nm	2518	2518	2518
	@ psi	2,900	2,900	2,900	@ bar	200	200	200
Recovery Rate (GP Styrene) calculated	oz/sec	2.7	3.2	4.0	gr/sec	76	90	115
High Torque Screw Speed Maximum	rpm	221	221	221	rpm	221	221	221
High Torque at Screw	in-lb	34,700	34,700	34,700	Nm	3918	3918	3918
	@ psi	2,900	2,900	2,900	@ bar	200	200	200
Recovery Rate (GP Styrene) calculated	oz/sec	1.8	2.4	3.5	gr/sec	50	69	100
Number of Pyrometers (barrel/nozzle)		4 / 1	4 / 1	4 / 1		4 / 1	4 / 1	4 / 1
Total Heat Capacity	kW	24.3	29.1	29.1	kW	24.3	29.1	29.1

INJECTION UNIT SPECIFICATIONS

	English	A	B	C	Metric	A	B	C
Injection Capacity Maximum								
G.P. Styrene (theoretical)	oz	46	60	76	g	1304	1701	2155
Displacement	in ³	84.5	110.4	139.8	cm ³	1385	1810	2290
Injection Pressure Maximum	psi	33,200	27,800	21,900	bar	2290	1917	1510
Injection Rate - Standard	in ³ /sec	21	28	35	cm ³ /sec	344	459	574
Injection Rate - MAXIMA PLUS	in ³ /sec	82	107	135	cm ³ /sec	1434	1753	2212
Screw Stroke	in	14.2	14.2	14.2	mm	360	360	360
Screw Diameter	in	2.76	3.15	3.54	mm	70	80	90
Screw L/D		22.0	22.8	20.0		22.0	22.8	22.0
Low Torque Screw Speed Maximum	rpm	285	253	225	rpm	285	253	225
Low Torque at Screw	in-lb	26,900	26,900	26,900	Nm	3037	3037	3037
	@ psi	2,900	2,900	2,900	@ bar	200	200	200
Recovery Rate (GP Styrene) calculated	oz/sec	3.1	4.0	4.7	gr/sec	89	115	134
High Torque Screw Speed Maximum	rpm	188	188	188	rpm	188	188	188
High Torque at Screw	in-lb	40,700	40,700	40,700	Nm	4595	4595	4595
	@ psi	2,900	2,900	2,900	@ bar	200	200	200
Recovery Rate (GP Styrene) calculated	oz/sec	2.1	3.0	3.9	gr/sec	59	85	112
Number of Pyrometers (barrel/nozzle)		4 / 1	4 / 1	4 / 1		4 / 1	4 / 1	4 / 1
Total Heat Capacity	kW	35.8	41.2	41.2	kW	35.8	41.2	41.2

MAXIMA MM 550

CLAMP UNIT SPECIFICATIONS

	English		Metric	
Clamp Force	tons	550	kN	4895
Clamp Opening Force	tons	28	kN	250
Clamp Stroke	in.	58.1	mm	1475
Clamp Speed Open	in./sec.	45	mm/sec.	1143
Clamp Speed Close	in./sec.	45	mm/sec.	1143
Maximum Daylight	in.	67.9	mm	1725
Min/Max Mold Thickness	in.	9.8 / 39.4	mm	250 / 1000
Maximum Mold Weight	lbs.	16,500	kgs	7483
Platen Size (H x V)	in.	49.2 x 49.2	mm	1250 x 1250
Distance Between Tie Rods (H x V)	in.	36.2 x 36.2	mm	920 x 920
Tie Rod Diameter	in.	5.71	mm	145
Ejector Stroke (Max)	in.	9.8	mm	250
Ejector Force @2000 psi	tons	13.2	kN	117

MACHINE SPECIFICATIONS

	English		Metric	
Overall Length (w/ 3470 IU)	in.	308.5	mm	7836
Overall Width	in.	100.4	mm	2550
Overall Height	in.	123.7	mm	3141
Shipping Weight (without oil)	lbs.	47,500	kg	21545
Hydraulic System Pressure	psi	2,950	bar	203
Variable Volume Pump Capacity	gpm	60	L/min	227
Fixed Pump Capacity	gpm	72	L/min	273
Injection and Extruder	gpm	111	L/min	420
Eject and Core Pull	gpm	21	L/min	79
Electric Motor	hp	100	kw	75
Total Oil Reservoir Capacity	gal	260	L	984
Heat Exchanger Water @85° F	gpm	21	L/min	79



INJECTION UNIT SPECIFICATIONS

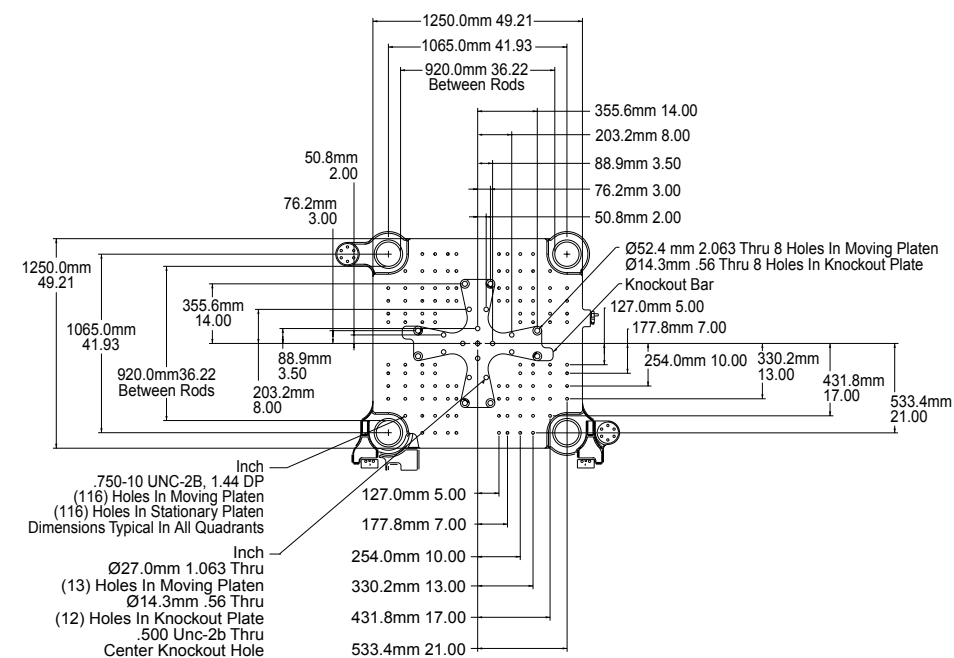
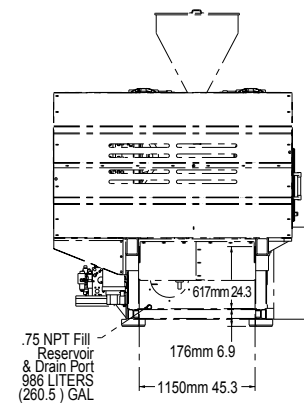
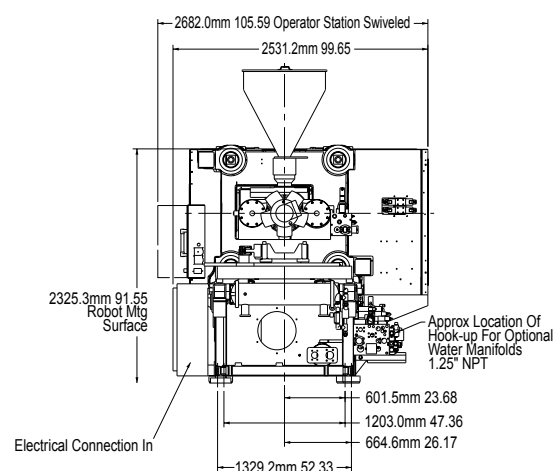
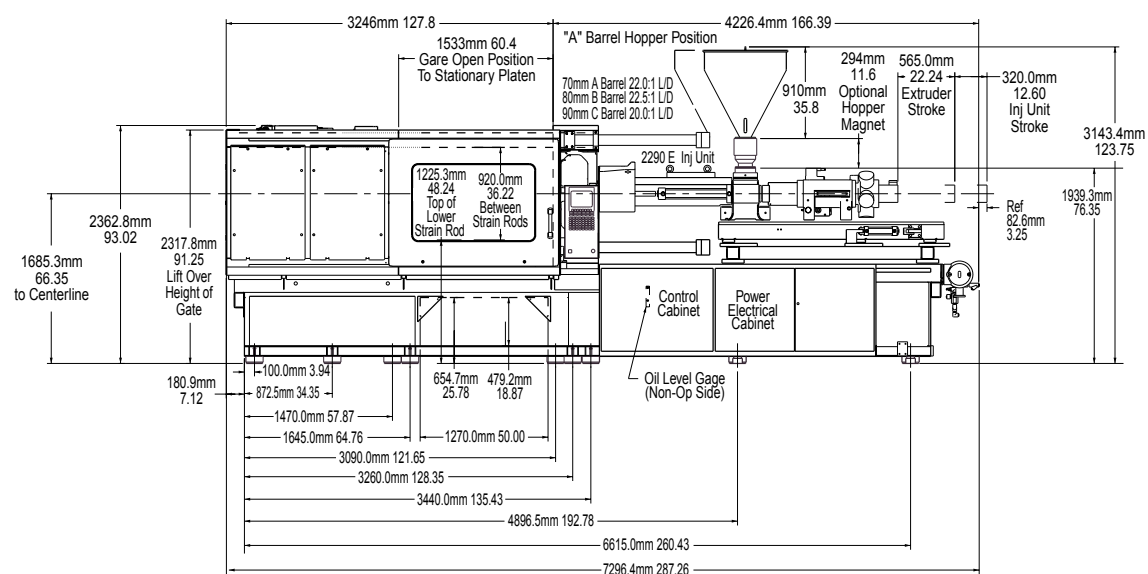
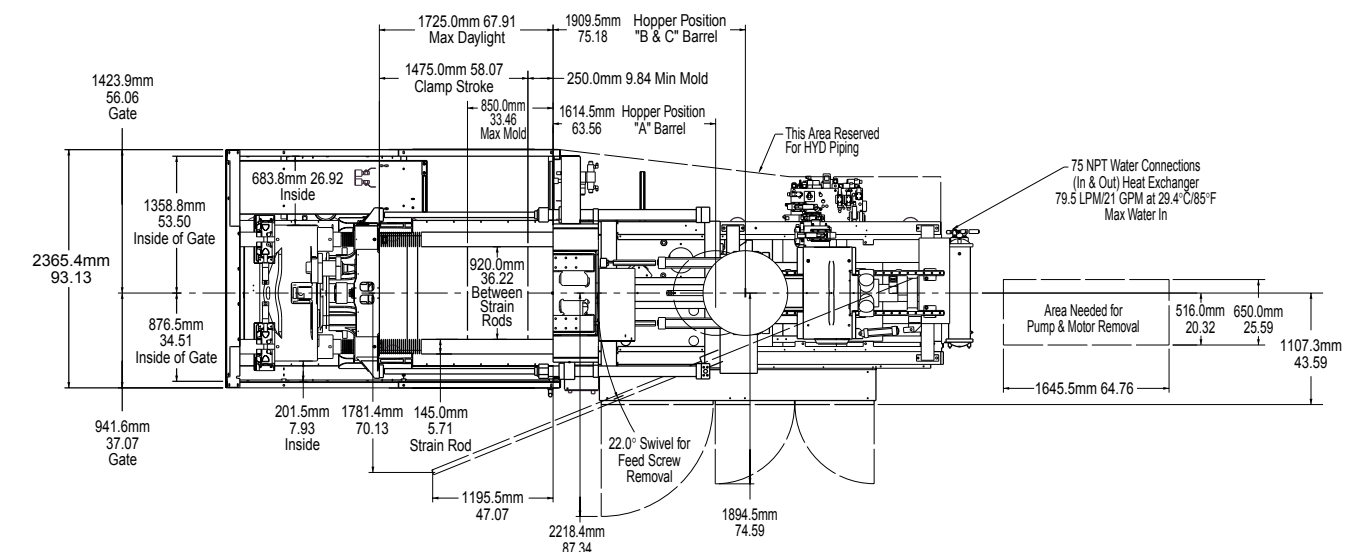
	English	A	B	C	Metric	A	B	C
Injection Capacity Maximum								
G.P. Styrene (theoretical)	oz	30	41	54	g	851	1162	1531
Displacement	in ³	55.2	75.2	98.2	cm ³	905	1232	1609
Injection Pressure Maximum	psi	32,400	26,900	20,600	bar	2234	1855	1421
Injection Rate - Standard	in ³ /sec	29	40	52	cm ³ /sec	475	655	852
Injection Rate - MAXIMA PLUS	in ³ /sec	86	117	153	cm ³ /sec	1409	1917	2507
Screw Stroke	in	12.6	12.6	12.6	mm	320	320	320
Screw Diameter	in	2.36	2.76	3.15	mm	60	70	80
Screw L/D		22.0	22.9	20.0		22.0	22.9	22.0
Low Torque Screw Speed Maximum	rpm	337	289	253	rpm	337	289	253
Low Torque at Screw	in-lb	22,300	22,300	22,300	Nm	2518	2518	2518
	@ psi	2,900	2,900	2,900	@ bar	200	200	200
Recovery Rate (GP Styrene) calculated	oz/sec	2.7	3.2	4.0	gr/sec	76	90	115
High Torque Screw Speed Maximum	rpm	306	289	253	rpm	306	289	253
High Torque at Screw	in-lb	34,700	34,700	34,700	Nm	3918	3918	3918
	@ psi	2,900	2,900	2,900	@ bar	200	200	200
Recovery Rate (GP Styrene) calculated	oz/sec	2.4	3.2	4.0	gr/sec	69	90	115
Number of Pyrometers (barrel/nozzle)		4 / 1	4 / 1	4 / 1		4 / 1	4 / 1	4 / 1
Total Heat Capacity	kW	24.3	29.1	29.1	kW	24.3	29.1	29.1

INJECTION UNIT SPECIFICATIONS

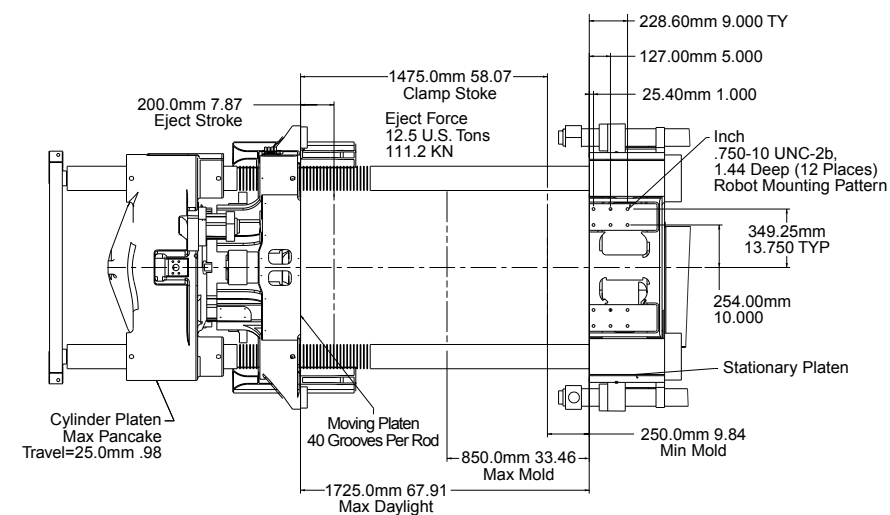
	English	A	B	C	Metric	A	B	C
Injection Capacity Maximum								
G.P. Styrene (theoretical)	oz	46	60	76	g	1304	1701	2155
Displacement	in ³	84.5	110.4	139.8	cm ³	1385	1810	2290
Injection Pressure Maximum	psi	33,200	27,800	21,900	bar	2290	1917	1510
Injection Rate - Standard	in ³ /sec	29	39	49	cm ³ /sec	475	639	803
Injection Rate - MAXIMA PLUS	in ³ /sec	82	107	135	cm ³ /sec	1434	1753	2212
Screw Stroke	in	14.2	14.2	14.2	mm	360	360	360
Screw Diameter	in	2.76	3.15	3.54	mm	70	80	90
Screw L/D		22.0	22.8	20.0		22.0	22.8	22.0
Low Torque Screw Speed Maximum	rpm	289	253	225	rpm	289	253	225
Low Torque at Screw	in-lb	26,900	26,900	26,900	Nm	3037	3037	3037
	@ psi	2,900	2,900	2,900	@ bar	200	200	200
Recovery Rate (GP Styrene) calculated	oz/sec	3.2	4.0	4.7	gr/sec	90	115	134
High Torque Screw Speed Maximum	rpm	261	253	225	rpm	261	253	225
High Torque at Screw	in-lb	40,700	40,700	40,700	Nm	4595	4595	4595
	@ psi	2,900	2,900	2,900	@ bar	200	200	200
Recovery Rate (GP Styrene) calculated	oz/sec	2.9	4.0	4.7	gr/sec	81	115	134
Number of Pyrometers (barrel/nozzle)		4 / 1	4 / 1	4 / 1		4 / 1	4 / 1	4 / 1
Total Heat Capacity	kW	35.8	41.2	41.2	kW	35.8	41.2	41.2

INJECTION UNIT SPECIFICATIONS

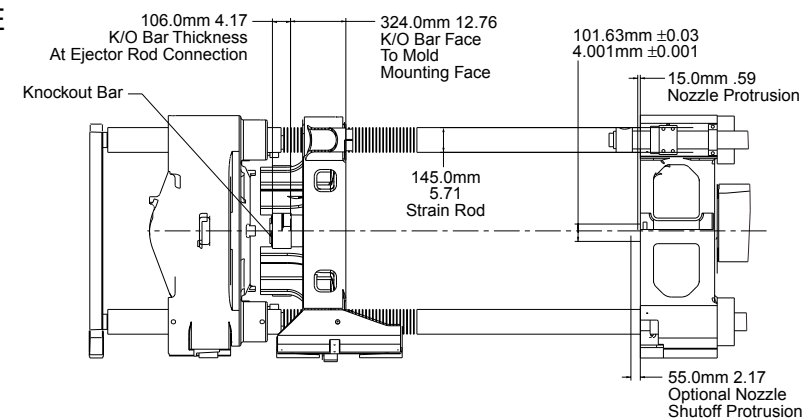
	English	A	B	Metric	A	B
Injection Capacity Maximum						
G.P. Styrene (theoretical)	oz	85	105	g	2410	2977
Displacement	in ³	155.3	191.7	cm ³	2545	3142
Injection Pressure Maximum	psi	27,800	22,500	bar	1917	1552
Injection Rate - Standard	in ³ /sec	39	48	cm ³ /sec	639	787
Injection Rate - MAXIMA PLUS	in ³ /sec	135	167	cm ³ /sec	2212	2736
Screw Stroke	in	15.7	15.7	mm	400	400
Screw Diameter	in	3.54	3.94	mm	90	100
Screw L/D		22.2	20.0		22.2	20.0
Low Torque Screw Speed Maximum	rpm	225	202	rpm	225	202
Low Torque at Screw	in-lb	36,100	36,100	Nm	4076	4076
	@ psi	2,900	2,900	@ bar	200	200
Recovery Rate (GP Styrene) calculated	oz/sec	4.7	5.8	gr/sec	134	164
High Torque Screw Speed Maximum	rpm	194	194	rpm	194	194
High Torque at Screw	in-lb	54,800	54,800	Nm	6187	6187
	@ psi	2,900	2,900	@ bar	200	200
Recovery Rate (GP Styrene) calculated	oz/sec	4.7	5.8	gr/sec	134	164
Number of Pyrometers (barrel/nozzle)		4 / 1	4 / 1		4 / 1	4 / 1
Total Heat Capacity	kW	53.8	53.8	kW	53.8	53.8



DIE SPACE



SIDE



MAXIMA MM 580 WP

CLAMP UNIT SPECIFICATIONS

	English		Metric	
Clamp Force	tons	580	kN	5150
Clamp Opening Force	tons	29	kN	257
Clamp Stroke	in.	71.9	mm	1825
Clamp Speed Open	in./sec.	41	mm/sec.	1041
Clamp Speed Close	in./sec.	39	mm/sec.	991
Maximum Daylight	in.	81.7	mm	2075
Min/Max Mold Thickness	in.	9.8 / 39.4	mm	250 / 1000
Maximum Mold Weight	lbs.	22,100	kgs	10025
Platen Size (H x V)	in.	56.3 x 49.2	mm	1430 x 1250
Distance Between Tie Rods (H x V)	in.	43.3 x 36.2	mm	1100 x 920
Tie Rod Diameter	in.	5.71	mm	145
Ejector Stroke (Max)	in.	7.9	mm	200
Ejector Force @2000 psi	tons	13.2	kN	117

MACHINE SPECIFICATIONS

	English		Metric	
Overall Length (w/ 3470 IU)	in.	354.1	mm	8994
Overall Width	in.	103.0	mm	2615
Overall Height	in.	129.0	mm	3278
Shipping Weight (without oil)	lbs.	57,250	kg	26020
Hydraulic System Pressure	psi	2,950	bar	203
Variable Volume Pump Capacity	gpm	60	L/min	227
Fixed Pump Capacity	gpm	72	L/min	273
Injection and Extruder	gpm	111	L/min	420
Eject and Core Pull	gpm	21	L/min	79
Electric Motor	hp	100	kw	75
Total Oil Reservoir Capacity	gal	260	L	984
Heat Exchanger Water @85° F	gpm	21	L/min	79



MAXIMA MM580WP

INJECTION UNIT SPECIFICATIONS

	English	A	B	C	Metric	A	B	C
Injection Capacity Maximum								
G.P. Styrene (theoretical)	oz	46	60	76	g	1304	1701	2155
Displacement	in ³	84.5	110.4	139.8	cm ³	1385	1810	2290
Injection Pressure Maximum	psi	33,200	27,800	21,900	bar	2290	1917	1510
Injection Rate - Standard	in ³ /sec	29	39	49	cm ³ /sec	475	639	803
Injection Rate - MAXIMA PLUS	in ³ /sec	82	107	135	cm ³ /sec	1434	1753	2212
Screw Stroke	in	14.2	14.2	14.2	mm	360	360	360
Screw Diameter	in	2.76	3.15	3.54	mm	70	80	90
Screw L/D		22.0	22.8	20.0		22.0	22.8	22.0
Low Torque Screw Speed Maximum	rpm	289	253	225	rpm	289	253	225
Low Torque at Screw	in-lb	26,900	26,900	26,900	Nm	3037	3037	3037
	@ psi	2,900	2,900	2,900	@ bar	200	200	200
Recovery Rate (GP Styrene) calculated	oz/sec	3.2	4.0	4.7	gr/sec	90	115	134
High Torque Screw Speed Maximum	rpm	261	253	225	rpm	261	253	225
High Torque at Screw	in-lb	40,700	40,700	40,700	Nm	4595	4595	4595
	@ psi	2,900	2,900	2,900	@ bar	200	200	200
Recovery Rate (GP Styrene) calculated	oz/sec	3.2	4.0	4.7	gr/sec	90	115	134
Number of Pyrometers (barrel/nozzle)		4 / 1	4 / 1	4 / 1		4 / 1	4 / 1	4 / 1
Total Heat Capacity	kW	35.8	41.2	41.2	kW	35.8	41.2	41.2

INJECTION UNIT SPECIFICATIONS

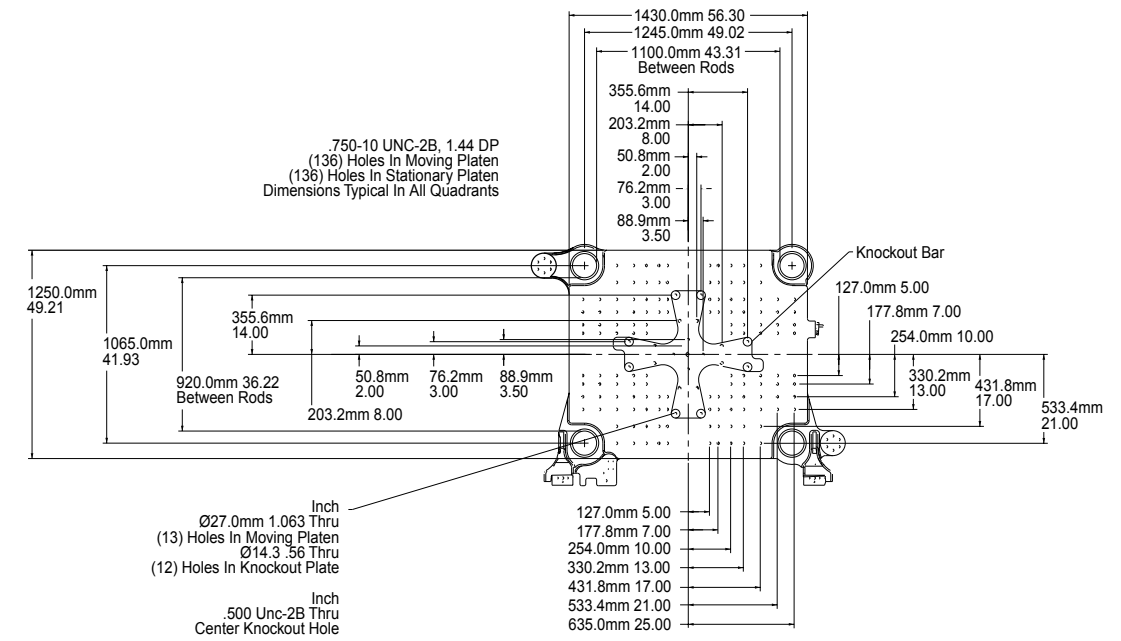
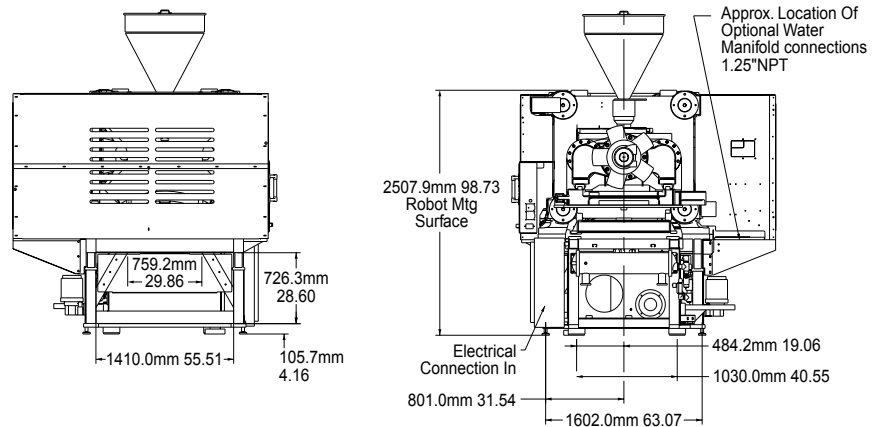
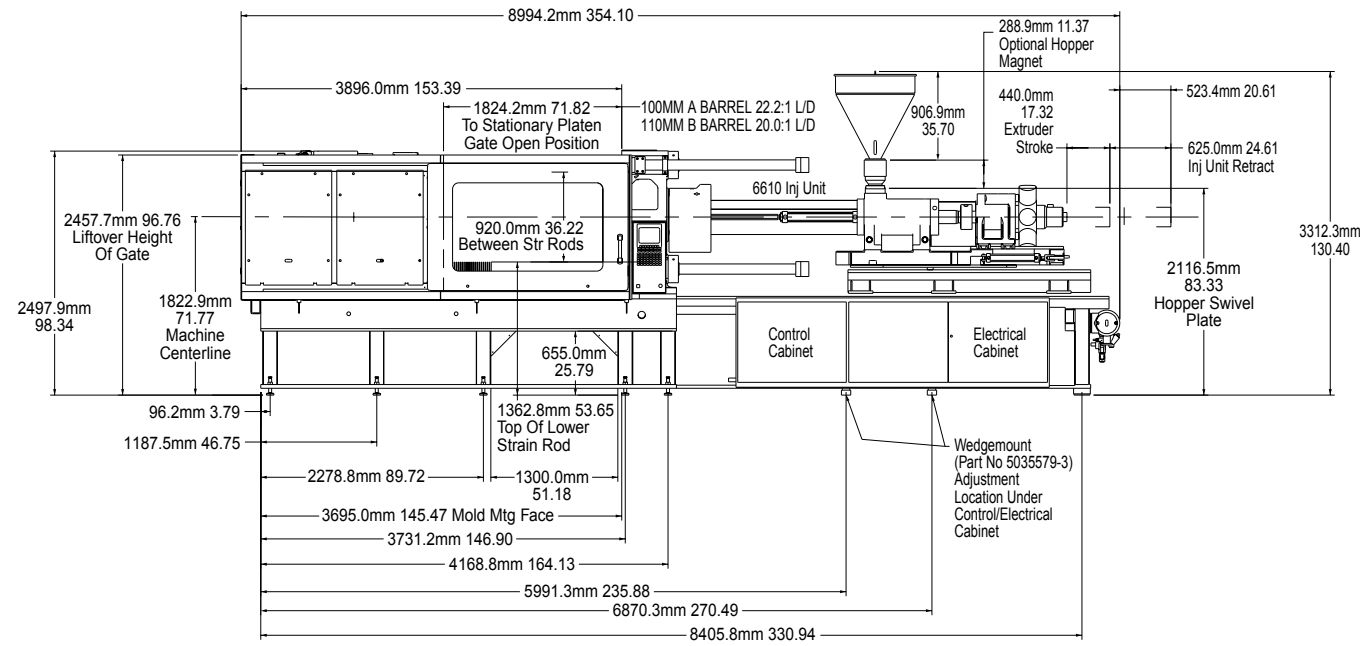
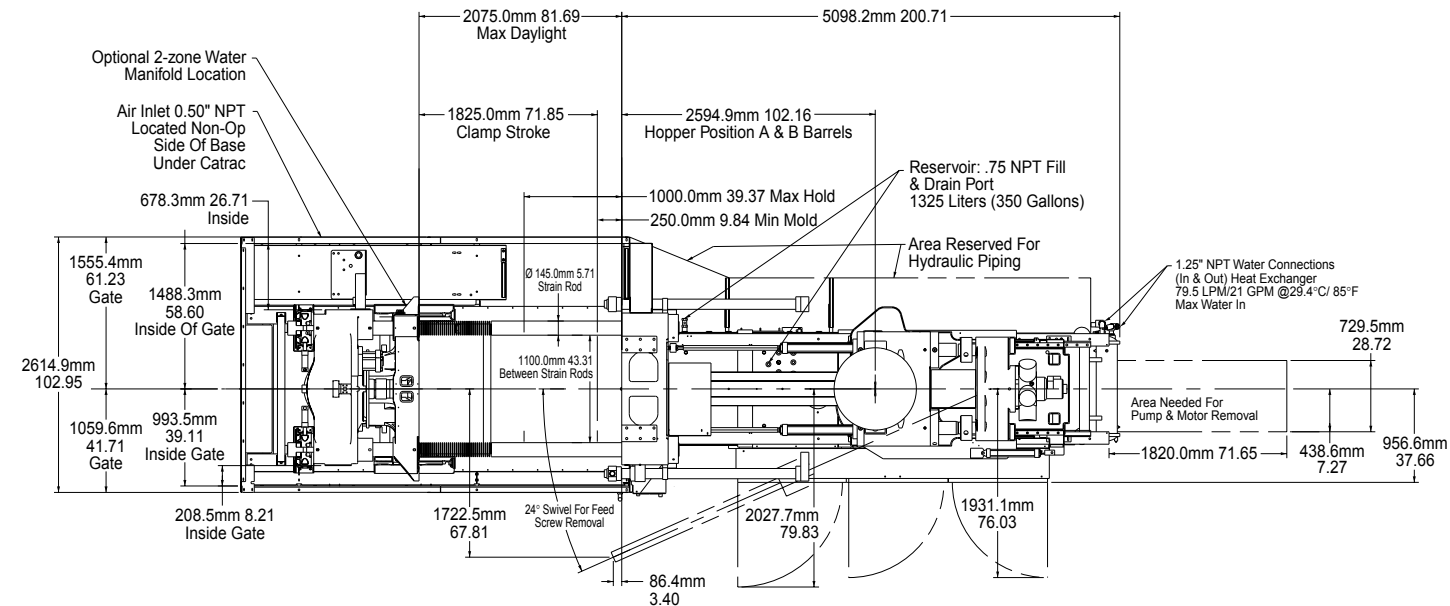
	English	A	B	Metric	A	B
Injection Capacity Maximum						
G.P. Styrene (theoretical)	oz	85	105	g	2410	2977
Displacement	in ³	155.3	191.7	cm ³	2545	3142
Injection Pressure Maximum	psi	27,800	22,500	bar	1917	1552
Injection Rate - Standard	in ³ /sec	39	48	cm ³ /sec	639	787
Injection Rate - MAXIMA PLUS	in ³ /sec	135	167	cm ³ /sec	2212	2736
Screw Stroke	in	15.7	15.7	mm	400	400
Screw Diameter	in	3.54	3.94	mm	90	100
Screw L/D		22.2	20.0		22.2	20.0
Low Torque Screw Speed Maximum	rpm	225	202	rpm	225	202
Low Torque at Screw	in-lb	36,100	36,100	Nm	4076	4076
	@ psi	2,900	2,900	@ bar	200	200
Recovery Rate (GP Styrene) calculated	oz/sec	4.7	5.8	gr/sec	134	164
High Torque Screw Speed Maximum	rpm	194	194	rpm	194	194
High Torque at Screw	in-lb	54,800	54,800	Nm	6187	6187
	@ psi	2,900	2,900	@ bar	200	200
Recovery Rate (GP Styrene) calculated	oz/sec	4.1	5.5	gr/sec	115	157
Number of Pyrometers (barrel/nozzle)		4 / 1	4 / 1		4 / 1	4 / 1
Total Heat Capacity	kW	53.8	53.8	kW	53.8	53.8

INJECTION UNIT SPECIFICATIONS

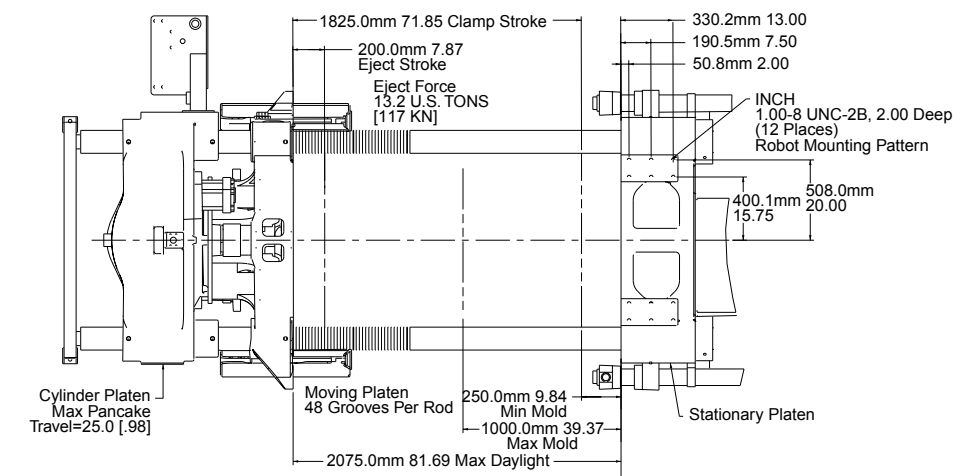
	English	A	B	Metric	A	B
Injection Capacity Maximum						
G.P. Styrene (theoretical)	oz	116	140	g	3289	3969
Displacement	in ³	210.9	255.2	cm ³	3456	4181
Injection Pressure Maximum	psi	27,700	22,900	bar	1910	1579
Injection Rate - Standard	in ³ /sec	39	47	cm ³ /sec	639	770
Injection Rate - MAXIMA PLUS	in ³ /sec	136	165	cm ³ /sec	2228	2703
Screw Stroke	in	17.3	17.3	mm	440	440
Screw Diameter	in	3.94	4.33	mm	100	110
Screw L/D		22.2	20.0		22.2	20.0
Low Torque Screw Speed Maximum	rpm	202	184	rpm	202	184
Low Torque at Screw	in-lb	48,200	48,200	Nm	5442	5442
	@ psi	2,900	2,900	@ bar	200	200
Recovery Rate (GP Styrene) calculated	oz/sec	5.8	6.6	gr/sec	164	188
High Torque Screw Speed Maximum	rpm	129	129	rpm	129	129
High Torque at Screw	in-lb	82,400	82,400	Nm	9303	9303
	@ psi	2,900	2,900	@ bar	200	200
Recovery Rate (GP Styrene) calculated	oz/sec	3.7	4.6	gr/sec	105	131
Number of Pyrometers (barrel/nozzle)		4 / 1	4 / 1		4 / 1	4 / 1
Total Heat Capacity	kW	56.0	56.0	kW	56.0	56.0

INJECTION UNIT SPECIFICATIONS

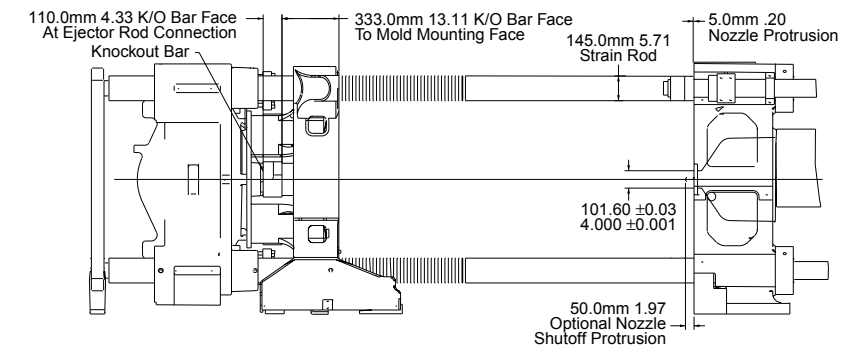
	English	A	B	Metric	A	B
Injection Capacity Maximum						
G.P. Styrene (theoretical)	oz	178	230	g	5046	6521
Displacement	in ³	324.8	419.4	cm ³	5322	6872
Injection Pressure Maximum	psi	27,500	21,200	bar	1897	1462
Injection Rate - Standard	in ³ /sec	52	67	cm ³ /sec	852	1098
Screw Stroke	in	22.0	22.0	mm	560	560
Screw Diameter	in	4.33	4.92	mm	110	125
Screw L/D		22.7	20.0		22.7	20.0
Low Torque Screw Speed Maximum	rpm	181	162	rpm	181	162
Low Torque at Screw	in-lb	69,500	69,500	Nm	7847	7847
	@ psi	2,300	2,300	@ bar	159	159
Recovery Rate (GP Styrene) calculated	oz/sec	6.5	8.2	gr/sec	184	234
High Torque Screw Speed Maximum	rpm	116	116	rpm	116	116
High Torque at Screw	in-lb	107,800	107,800	Nm	12171	12171
	@ psi	2,300	2,300	@ bar	159	159
Recovery Rate (GP Styrene) calculated	oz/sec	4.2	5.9	gr/sec	118	167
Number of Pyrometers (barrel/nozzle)		4 / 1	4 / 1		4 / 1	4 / 1
Total Heat Capacity	kW	61.2	61.2	kW	61.2	61.2



TOP



SIDE



MAXIMA MM 725

CLAMP UNIT SPECIFICATIONS

	English		Metric	
Clamp Force	tons	725	kN	6450
Clamp Opening Force	tons	37	kN	333
Clamp Stroke	in.	69.9	mm	1775
Clamp Speed Open	in./sec.	41	mm/sec.	1041
Clamp Speed Close	in./sec.	39	mm/sec.	991
Maximum Daylight	in.	81.7	mm	2075
Min/Max Mold Thickness	in.	11.8 / 43.3	mm	300 / 1100
Maximum Mold Weight	lbs.	26,485	kgs	12011
Platen Size (H x V)	in.	55.5 x 55.5	mm	1410 x 1410
Distance Between Tie Rods (H x V)	in.	42.5 x 42.5	mm	1080 x 1080
Tie Rod Diameter	in.	6.69	mm	170
Ejector Stroke (Max)	in.	9.8	mm	250
Ejector Force @2000 psi	tons	13.2	kN	117

MACHINE SPECIFICATIONS

	English			Metric		
Overall Length (w/ 3470 IU)	in.	371.3		mm	9430	
Overall Width	in.	104.0		mm	2642	
Overall Height	in.	132.4		mm	3364	
Shipping Weight (without oil)	lbs.	75,000		kg	34014	
		100 hp	150 hp*		100 hp	150hp*
Hydraulic System Pressure	psi	2,950	2,950	bar	203	203
Variable Volume Pump Capacity	gpm	60	65	L/min	227	246
Fixed Pump Capacity	gpm	72	121	L/min	273	458
Injection and Extruder	gpm	111	165	L/min	420	625
Eject and Core Pull	gpm	21	21	L/min	79	79
Electric Motor	hp	100	150	kw	75	112
Total Oil Reservoir Capacity	gal	260	350	L	984	1325
Heat Exchanger Water @85° F	gpm	21	41	L/min	79	155

* 150hp available with 101000 Injection Frame only



INJECTION UNIT SPECIFICATIONS

	English	A	B	C	Metric	A	B	C
Injection Capacity Maximum								
G.P. Styrene (theoretical)	oz	46	60	76	g	1304	1701	2155
Displacement	in ³	84.5	110.4	139.8	cm ³	1385	1810	2290
Injection Pressure Maximum	psi	33,200	27,800	21,900	bar	2290	1917	1510
Injection Rate - Standard	in ³ /sec	29	39	49	cm ³ /sec	475	639	803
Injection Rate - MAXIMA PLUS	in ³ /sec	82	107	135	cm ³ /sec	1434	1753	2212
Screw Stroke	in	14.2	14.2	14.2	mm	360	360	360
Screw Diameter	in	2.76	3.15	3.54	mm	70	80	90
Screw L/D		22.0	22.8	20.0		22.0	22.8	22.0
Low Torque Screw Speed Maximum	rpm	289	253	225	rpm	289	253	225
Low Torque at Screw	in-lb	26,900	26,900	26,900	Nm	3037	3037	3037
	@ psi	2,900	2,900	2,900	@ bar	200	200	200
Recovery Rate (GP Styrene) calculated	oz/sec	3.2	4.0	4.7	gr/sec	90	115	134
High Torque Screw Speed Maximum	rpm	261	253	225	rpm	261	253	225
High Torque at Screw	in-lb	40,700	40,700	40,700	Nm	4595	4595	4595
	@ psi	2,900	2,900	2,900	@ bar	200	200	200
Recovery Rate (GP Styrene) calculated	oz/sec	3.2	4.0	4.7	gr/sec	90	115	134
Number of Pyrometers (barrel/nozzle)		4 / 1	4 / 1	4 / 1		4 / 1	4 / 1	4 / 1
Total Heat Capacity	kW	35.8	41.2	41.2	kW	35.8	41.2	41.2

INJECTION UNIT SPECIFICATIONS

	English	A	B	Metric	A	B
Injection Capacity Maximum						
G.P. Styrene (theoretical)	oz	85	105	g	2410	2977
Displacement	in ³	155.3	191.7	cm ³	2545	3142
Injection Pressure Maximum	psi	27,800	22,500	bar	1917	1552
Injection Rate - Standard	in ³ /sec	39	48	cm ³ /sec	639	787
Injection Rate - MAXIMA PLUS	in ³ /sec	135	167	cm ³ /sec	2212	2736
Screw Stroke	in	15.7	15.7	mm	400	400
Screw Diameter	in	3.54	3.94	mm	90	100
Screw L/D		22.2	20.0		22.2	20.0
Low Torque Screw Speed Maximum	rpm	225	202	rpm	225	202
Low Torque at Screw	in-lb	36,100	36,100	Nm	4076	4076
	@ psi	2,900	2,900	@ bar	200	200
Recovery Rate (GP Styrene) calculated	oz/sec	4.7	5.8	gr/sec	134	164
High Torque Screw Speed Maximum	rpm	194	194	rpm	194	194
High Torque at Screw	in-lb	54,800	54,800	Nm	6187	6187
	@ psi	2,900	2,900	@ bar	200	200
Recovery Rate (GP Styrene) calculated	oz/sec	4.1	5.5	gr/sec	115	157
Number of Pyrometers (barrel/nozzle)		4 / 1	4 / 1		4 / 1	4 / 1
Total Heat Capacity	kW	53.8	53.8	kW	53.8	53.8

INJECTION UNIT SPECIFICATIONS

	English	A	B	Metric	A	B
Injection Capacity Maximum						
G.P. Styrene (theoretical)	oz	116	140	g	3289	3969
Displacement	in ³	210.9	255.2	cm ³	3456	4181
Injection Pressure Maximum	psi	27,700	22,900	bar	1910	1579
Injection Rate - Standard	in ³ /sec	39	47	cm ³ /sec	639	770
Injection Rate - MAXIMA PLUS	in ³ /sec	136	165	cm ³ /sec	2228	2703
Screw Stroke	in	17.3	17.3	mm	440	440
Screw Diameter	in	3.94	4.33	mm	100	110
Screw L/D		22.0	20.0		22.0	20.0
Low Torque Screw Speed Maximum	rpm	202	184	rpm	202	184
Low Torque at Screw	in-lb	48,200	48,200	Nm	5442	5442
	@ psi	2,900	2,900	@ bar	200	200
Recovery Rate (GP Styrene) calculated	oz/sec	5.8	6.6	gr/sec	164	188
High Torque Screw Speed Maximum	rpm	129	129	rpm	129	129
High Torque at Screw	in-lb	82,400	82,400	Nm	9303	9303
	@ psi	2,900	2,900	@ bar	200	200
Recovery Rate (GP Styrene) calculated	oz/sec	3.7	4.6	gr/sec	105	131
Number of Pyrometers (barrel/nozzle)		4 / 1	4 / 1		4 / 1	4 / 1
Total Heat Capacity	kW	56.0	56.0	kW	56.0	56.0

INJECTION UNIT SPECIFICATIONS

	English	A	B	Metric	A	B
Injection Capacity Maximum						
G.P. Styrene (theoretical)	oz	178	230	g	5046	6521
Displacement	in ³	324.8	419.4	cm ³	5322	6872
Injection Pressure Maximum	psi	27,500	21,200	bar	1897	1462
Injection Rate - Standard	in ³ /sec	52	67	cm ³ /sec	852	1098
Screw Stroke	in	22.0	22.0	mm	560	560
Screw Diameter	in	4.33	4.92	mm	110	125
Screw L/D		22.7	20.0		22.7	20.0
Low Torque Screw Speed Maximum	rpm	181	162	rpm	181	162
Low Torque at Screw	in-lb	69,500	69,500	Nm	7847	7847
	@ psi	2,300	2,300	@ bar	159	159
Recovery Rate (GP Styrene) calculated	oz/sec	6.5	8.2	gr/sec	184	234
High Torque Screw Speed Maximum	rpm	116	116	rpm	116	116
High Torque at Screw	in-lb	107,800	107,800	Nm	12171	12171
	@ psi	2,300	2,300	@ bar	159	159
Recovery Rate (GP Styrene) calculated	oz/sec	4.2	5.9	gr/sec	118	167
Number of Pyrometers (barrel/nozzle)		4 / 1	4 / 1		4 / 1	4 / 1
Total Heat Capacity	kW	61.2	61.2	kW	61.2	61.2



MAXIMA MM

950 WP

CLAMP UNIT SPECIFICATIONS

	English		Metric	
	Unit	Value	Unit	Value
Clamp Force	tons	955	kN	8500
Clamp Opening Force	tons	43	kN	382
Clamp Stroke	in.	72.8	mm	1850
Clamp Speed Open	in./sec.	38	mm/sec.	965
Clamp Speed Close	in./sec.	32	mm/sec.	813
Maximum Daylight	in.	88.6	mm	2250
Min/Max Mold Thickness	in.	15.7 / 47.2	mm	400 / 1200
Maximum Mold Weight	lbs.	38,000	kgs	17234
Platen Size (H x V)	in.	70.9 x 58.3	mm	1800 x 1480
Distance Between Tie Rods (H x V)	in.	54.7 x 42.1	mm	1390 x 1070
Tie Rod Diameter	in.	7.67	mm	195
Ejector Stroke (Max)	in.	9.8	mm	250
Ejector Force @2000 psi	tons	20.5	kN	182

MACHINE SPECIFICATIONS

	English		Metric	
	Unit	Value	Unit	Value
Overall Length (w/ 3470 IU)	in.	383.0	mm	9732
Overall Width	in.	118.0	mm	2997
Overall Height	in.	136.7	mm	3472
Shipping Weight (without oil)	lbs.	101,260	kg	46027
Hydraulic System Pressure	psi	2,950	bar	203
Variable Volume Pump Capacity	gpm	65	L/min	246
Fixed Pump Capacity	gpm	121	L/min	458
Injection and Extruder	gpm	165	L/min	625
Eject and Core Pull	gpm	21	L/min	79
Electric Motor	hp	150	kw	112
Total Oil Reservoir Capacity	gal	350	L	1325
Heat Exchanger Water @85° F	gpm	41	L/min	155



MAXIMA MM 950 WP

INJECTION UNIT SPECIFICATIONS

	English	A	B	C	Metric	A	B	C
Injection Capacity Maximum								
G.P. Styrene (theoretical)	oz	46	60	76	g	1304	1701	2155
Displacement	in ³	84.5	110.4	139.8	cm ³	1385	1810	2290
Injection Pressure Maximum	psi	33,200	27,800	21,900	bar	2290	1917	1510
Injection Rate - Standard	in ³ /sec	44	57	73	cm ³ /sec	721	934	1196
Injection Rate - MAXIMA PLUS	in ³ /sec	82	107	135	cm ³ /sec	1434	1753	2212
Screw Stroke	in	14.2	14.2	14.2	mm	360	360	360
Screw Diameter	in	2.76	3.15	3.54	mm	70	80	90
Screw L/D		22.0	22.8	20.0		22.0	22.8	22.0
Low Torque Screw Speed Maximum	rpm	289	253	225	rpm	289	253	225
Low Torque at Screw	in-lb	26,900	26,900	26,900	Nm	3037	3037	3037
	@ psi	2,900	2,900	2,900	@ bar	200	200	200
Recovery Rate (GP Styrene) calculated	oz/sec	3.2	4.0	4.7	gr/sec	90	115	134
High Torque Screw Speed Maximum	rpm	289	253	225	rpm	289	253	225
High Torque at Screw	in-lb	40,700	40,700	40,700	Nm	4595	4595	4595
	@ psi	2,900	2,900	2,900	@ bar	200	200	200
Recovery Rate (GP Styrene) calculated	oz/sec	3.2	4.0	4.7	gr/sec	90	115	134
Number of Pyrometers (barrel/nozzle)		4 / 1	4 / 1	4 / 1		4 / 1	4 / 1	4 / 1
Total Heat Capacity	kW	35.8	41.2	41.2	kW	35.8	41.2	41.2

INJECTION UNIT SPECIFICATIONS

	English	A	B	Metric	A	B
Injection Capacity Maximum						
G.P. Styrene (theoretical)	oz	85	105	g	2410	2977
Displacement	in ³	155.3	191.7	cm ³	2545	3142
Injection Pressure Maximum	psi	27,800	22,500	bar	1917	1552
Injection Rate - Standard	in ³ /sec	58	71	cm ³ /sec	950	1163
Injection Rate - MAXIMA PLUS	in ³ /sec	135	167	cm ³ /sec	2212	2736
Screw Stroke	in	15.7	15.7	mm	400	400
Screw Diameter	in	3.54	3.94	mm	90	100
Screw L/D		22.0	20.0		22.0	20.0
Low Torque Screw Speed Maximum	rpm	225	202	rpm	225	202
Low Torque at Screw	in-lb	36,100	36,100	Nm	4076	4076
	@ psi	2,900	2,900	@ bar	200	200
Recovery Rate (GP Styrene) calculated	oz/sec	4.7	5.8	gr/sec	134	164
High Torque Screw Speed Maximum	rpm	225	202	rpm	225	202
High Torque at Screw	in-lb	54,800	54,800	Nm	6187	6187
	@ psi	2,900	2,900	@ bar	200	200
Recovery Rate (GP Styrene) calculated	oz/sec	4.7	5.8	gr/sec	134	164
Number of Pyrometers (barrel/nozzle)		4 / 1	4 / 1		4 / 1	4 / 1
Total Heat Capacity	kW	53.8	53.8	kW	53.8	53.8

MAXIMA MM 950 WP

INJECTION UNIT SPECIFICATIONS

	English	A	B	Metric	A	B
Injection Capacity Maximum						
G.P. Styrene (theoretical)	oz	116	140	g	3289	3969
Displacement	in ³	210.9	255.2	cm ³	3456	4181
Injection Pressure Maximum	psi	27,700	22,900	bar	1910	1579
Injection Rate - Standard	in ³ /sec	58	70	cm ³ /sec	950	1147
Injection Rate - MAXIMA PLUS	in ³ /sec	136	165	cm ³ /sec	2228	2703
Screw Stroke	in	17.3	17.3	mm	440	440
Screw Diameter	in	3.94	4.33	mm	100	110
Screw L/D		22.0	20.0		22.0	20.0
Low Torque Screw Speed Maximum	rpm	202	184	rpm	202	184
Low Torque at Screw	in-lb	48,200	48,200	Nm	5442	5442
	@ psi	2,900	2,900	@ bar	200	200
Recovery Rate (GP Styrene) calculated	oz/sec	5.8	6.6	gr/sec	164	188
High Torque Screw Speed Maximum	rpm	202	184	rpm	202	184
High Torque at Screw	in-lb	82,400	82,400	Nm	9303	9303
	@ psi	2,900	2,900	@ bar	200	200
Recovery Rate (GP Styrene) calculated	oz/sec	5.8	6.6	gr/sec	164	188
Number of Pyrometers (barrel/nozzle)		4 / 1	4 / 1		4 / 1	4 / 1
Total Heat Capacity	kW	56.0	56.0	kW	56.0	56.0

INJECTION UNIT SPECIFICATIONS

	English	A	B	Metric	A	B
Injection Capacity Maximum						
G.P. Styrene (theoretical)	oz	178	230	g	5046	6521
Displacement	in ³	324.8	419.4	cm ³	5322	6872
Injection Pressure Maximum	psi	27,500	21,200	bar	1897	1462
Injection Rate - Standard	in ³ /sec	52	67	cm ³ /sec	852	1098
Screw Stroke	in	22.0	22.0	mm	560	560
Screw Diameter	in	4.33	4.92	mm	110	125
Screw L/D		22.7	20.0		22.7	20.0
Low Torque Screw Speed Maximum	rpm	181	162	rpm	181	162
Low Torque at Screw	in-lb	69,500	69,500	Nm	7847	7847
	@ psi	2,300	2,300	@ bar	159	159
Recovery Rate (GP Styrene) calculated	oz/sec	6.5	8.2	gr/sec	184	234
High Torque Screw Speed Maximum	rpm	116	116	rpm	116	116
High Torque at Screw	in-lb	107,800	107,800	Nm	12171	12171
	@ psi	2,300	2,300	@ bar	159	159
Recovery Rate (GP Styrene) calculated	oz/sec	4.2	5.9	gr/sec	118	167
Number of Pyrometers (barrel/nozzle)		4 / 1	4 / 1		4 / 1	4 / 1
Total Heat Capacity	kW	61.2	61.2	kW	61.2	61.2