

MAXIMA MM 550

CLAMP UNIT SPECIFICATIONS

	English		Metric	
Clamp Force	tons	550	kN	4895
Clamp Opening Force	tons	28	kN	250
Clamp Stroke	in.	58.1	mm	1475
Clamp Speed Open	in./sec.	45	mm/sec.	1143
Clamp Speed Close	in./sec.	45	mm/sec.	1143
Maximum Daylight	in.	67.9	mm	1725
Min/Max Mold Thickness	in.	9.8 / 39.4	mm	250 / 1000
Maximum Mold Weight	lbs.	16,500	kgs	7483
Platen Size (H x V)	in.	49.2 x 49.2	mm	1250 x 1250
Distance Between Tie Rods (H x V)	in.	36.2 x 36.2	mm	920 x 920
Tie Rod Diameter	in.	5.71	mm	145
Ejector Stroke (Max)	in.	9.8	mm	250
Ejector Force @2000 psi	tons	13.2	kN	117

MACHINE SPECIFICATIONS

	English		Metric	
Overall Length (w/ 3470 IU)	in.	308.5	mm	7836
Overall Width	in.	100.4	mm	2550
Overall Height	in.	123.7	mm	3141
Shipping Weight (without oil)	lbs.	47,500	kg	21545
Hydraulic System Pressure	psi	2,950	bar	203
Variable Volume Pump Capacity	gpm	60	L/min	227
Fixed Pump Capacity	gpm	72	L/min	273
Injection and Extruder	gpm	111	L/min	420
Eject and Core Pull	gpm	21	L/min	79
Electric Motor	hp	100	kw	75
Total Oil Reservoir Capacity	gal	260	L	984
Heat Exchanger Water @85° F	gpm	21	L/min	79



INJECTION UNIT SPECIFICATIONS

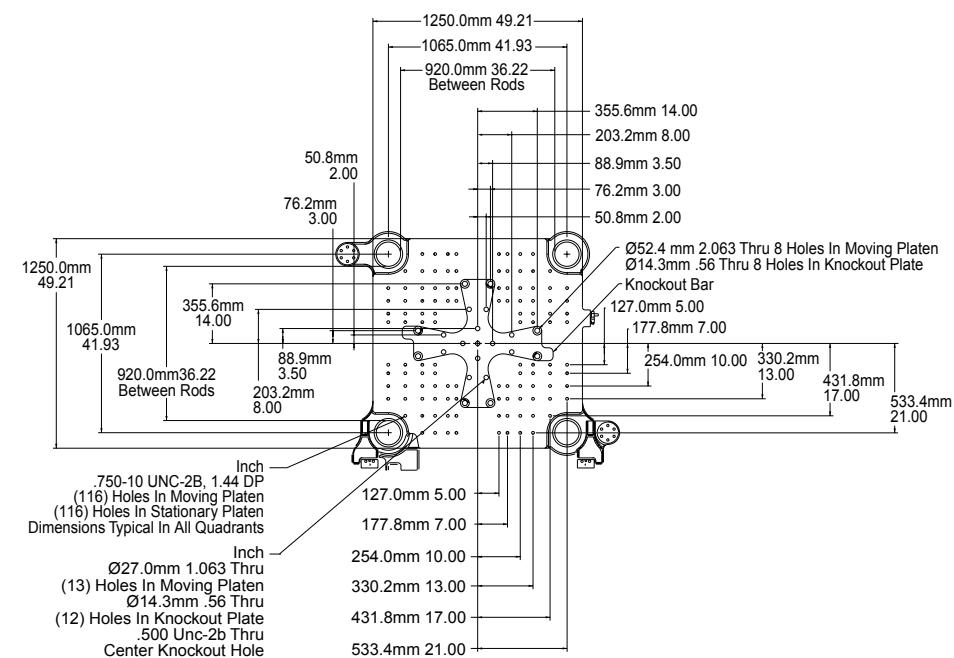
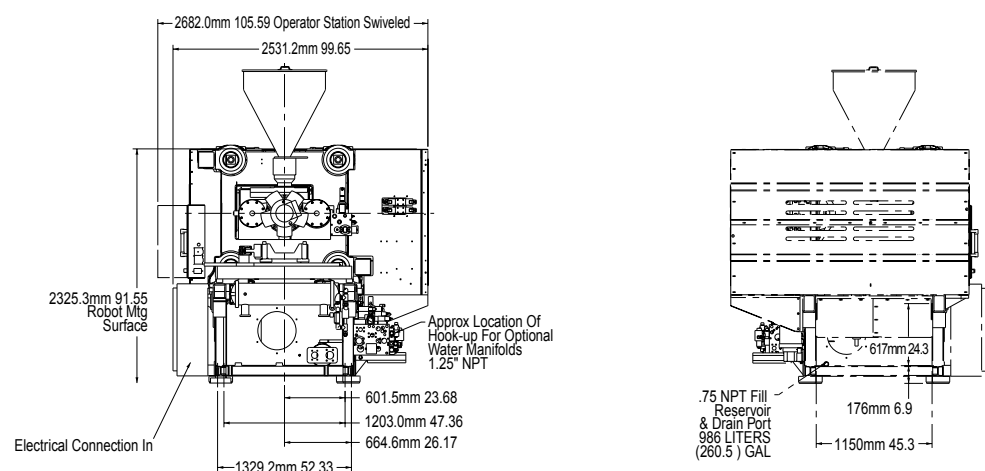
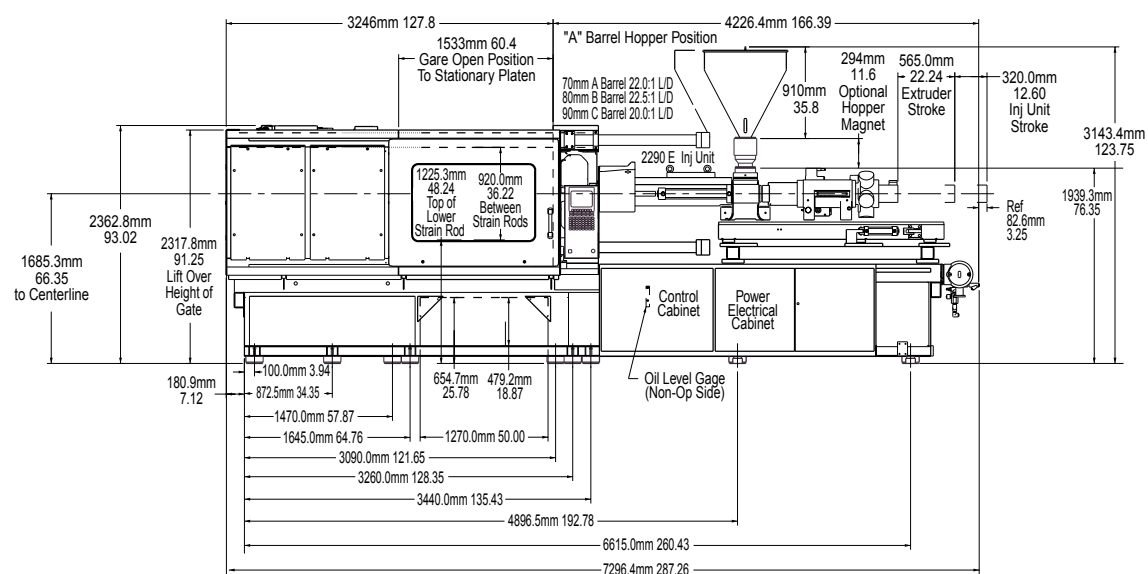
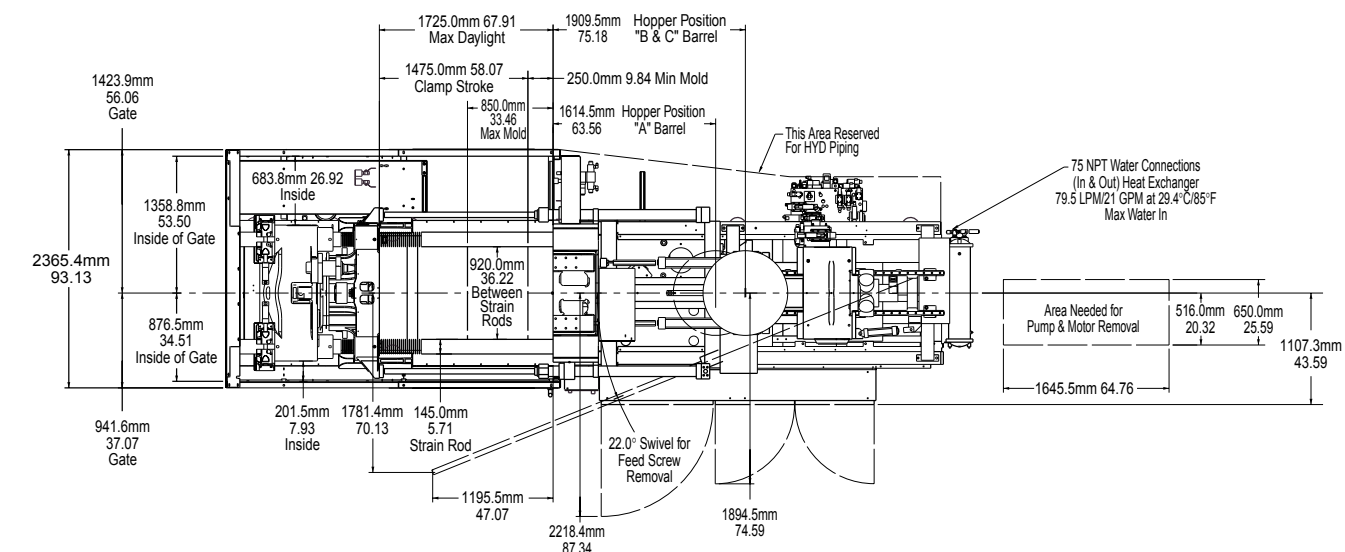
	English	A	B	C	Metric	A	B	C
Injection Capacity Maximum								
G.P. Styrene (theoretical)	oz	30	41	54	g	851	1162	1531
Displacement	in ³	55.2	75.2	98.2	cm ³	905	1232	1609
Injection Pressure Maximum	psi	32,400	26,900	20,600	bar	2234	1855	1421
Injection Rate - Standard	in ³ /sec	29	40	52	cm ³ /sec	475	655	852
Injection Rate - MAXIMA PLUS	in ³ /sec	86	117	153	cm ³ /sec	1409	1917	2507
Screw Stroke	in	12.6	12.6	12.6	mm	320	320	320
Screw Diameter	in	2.36	2.76	3.15	mm	60	70	80
Screw L/D		26.9	22.9	20.0		26.9	22.9	22.0
Low Torque Screw Speed Maximum	rpm	337	289	253	rpm	337	289	253
Low Torque at Screw	in-lb	22,300	22,300	22,300	Nm	2518	2518	2518
	@ psi	2,900	2,900	2,900	@ bar	200	200	200
Recovery Rate (GP Styrene) calculated	oz/sec	2.7	3.2	4.0	gr/sec	76	90	115
High Torque Screw Speed Maximum	rpm	306	289	253	rpm	306	289	253
High Torque at Screw	in-lb	34,700	34,700	34,700	Nm	3918	3918	3918
	@ psi	2,900	2,900	2,900	@ bar	200	200	200
Recovery Rate (GP Styrene) calculated	oz/sec	2.4	3.2	4.0	gr/sec	69	90	115
Number of Pyrometers (barrel/nozzle)		4 / 1	4 / 1	4 / 1		4 / 1	4 / 1	4 / 1
Total Heat Capacity	kW	39.5	39.5	39.5	kW	39.5	39.5	39.5

INJECTION UNIT SPECIFICATIONS

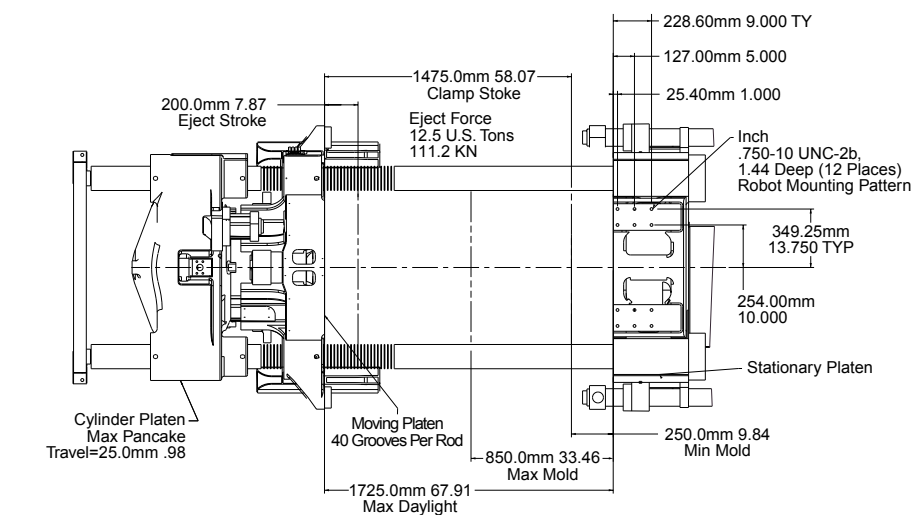
	English	A	B	C	Metric	A	B	C
Injection Capacity Maximum								
G.P. Styrene (theoretical)	oz	46	60	76	g	1304	1701	2155
Displacement	in ³	84.5	110.4	139.8	cm ³	1385	1810	2290
Injection Pressure Maximum	psi	33,200	27,800	21,900	bar	2290	1917	1510
Injection Rate - Standard	in ³ /sec	29	39	49	cm ³ /sec	475	639	803
Injection Rate - MAXIMA PLUS	in ³ /sec	82	107	135	cm ³ /sec	1434	1753	2212
Screw Stroke	in	14.2	14.2	14.2	mm	360	360	360
Screw Diameter	in	2.76	3.15	3.54	mm	70	80	90
Screw L/D		26.0	22.8	20.0		26.0	22.8	22.0
Low Torque Screw Speed Maximum	rpm	289	253	225	rpm	289	253	225
Low Torque at Screw	in-lb	26,900	26,900	26,900	Nm	3037	3037	3037
	@ psi	2,900	2,900	2,900	@ bar	200	200	200
Recovery Rate (GP Styrene) calculated	oz/sec	3.2	4.0	4.7	gr/sec	90	115	134
High Torque Screw Speed Maximum	rpm	261	253	225	rpm	261	253	225
High Torque at Screw	in-lb	40,700	40,700	40,700	Nm	4595	4595	4595
	@ psi	2,900	2,900	2,900	@ bar	200	200	200
Recovery Rate (GP Styrene) calculated	oz/sec	2.9	4.0	4.7	gr/sec	81	115	134
Number of Pyrometers (barrel/nozzle)		4 / 1	4 / 1	4 / 1		4 / 1	4 / 1	4 / 1
Total Heat Capacity	kW	57.8	57.8	57.8	kW	57.8	57.8	57.8

INJECTION UNIT SPECIFICATIONS

	English	A	B	Metric	A	B
Injection Capacity Maximum						
G.P. Styrene (theoretical)	oz	85	105	g	2410	2977
Displacement	in ³	155.3	191.7	cm ³	2545	3142
Injection Pressure Maximum	psi	27,800	22,500	bar	1917	1552
Injection Rate - Standard	in ³ /sec	39	48	cm ³ /sec	639	787
Injection Rate - MAXIMA PLUS	in ³ /sec	135	167	cm ³ /sec	2212	2736
Screw Stroke	in	15.7	15.7	mm	400	400
Screw Diameter	in	3.54	3.94	mm	90	100
Screw L/D		22.2	20.0		22.2	20.0
Low Torque Screw Speed Maximum	rpm	225	202	rpm	225	202
Low Torque at Screw	in-lb	36,100	36,100	Nm	4076	4076
	@ psi	2,900	2,900	@ bar	200	200
Recovery Rate (GP Styrene) calculated	oz/sec	4.7	5.8	gr/sec	134	164
High Torque Screw Speed Maximum	rpm	194	194	rpm	194	194
High Torque at Screw	in-lb	54,800	54,800	Nm	6187	6187
	@ psi	2,900	2,900	@ bar	200	200
Recovery Rate (GP Styrene) calculated	oz/sec	4.7	5.8	gr/sec	134	164
Number of Pyrometers (barrel/nozzle)		4 / 1	4 / 1		4 / 1	4 / 1
Total Heat Capacity	kW	53.8	53.8	kW	53.8	53.8



DIE SPACE



SIDE

