

# D-M-E

## INSTALLATION DATA

For: INSERTS FOR ANGLE PINS

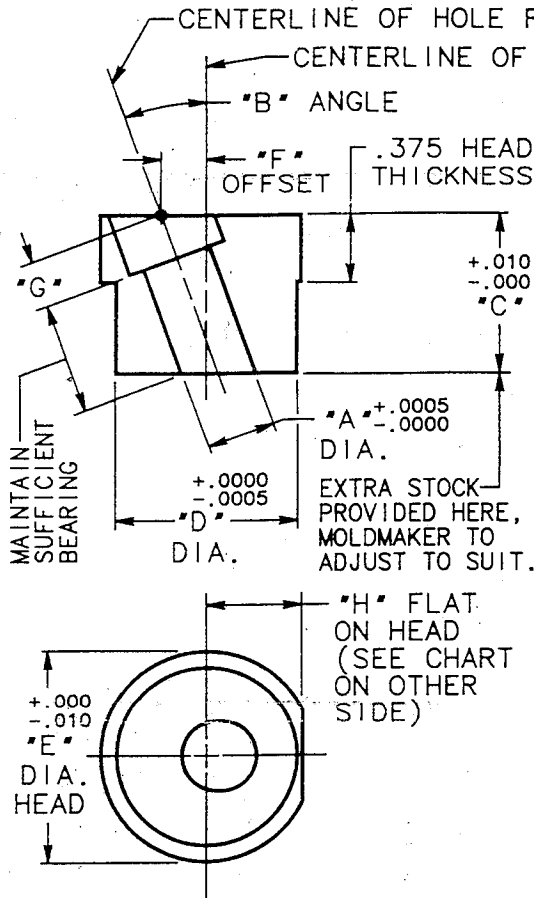
DESIGNED FOR USE WITH STANDARD D-M-E ANGLE PINS

Please read carefully before installing components

MATERIAL: 420 TYPE  
STAINLESS STEEL  
R/C 32-38

U.S. PATENT NUMBER 5,234,329

### BASIC DIMENSIONS ON INSERTS FOR ANGLE PINS:



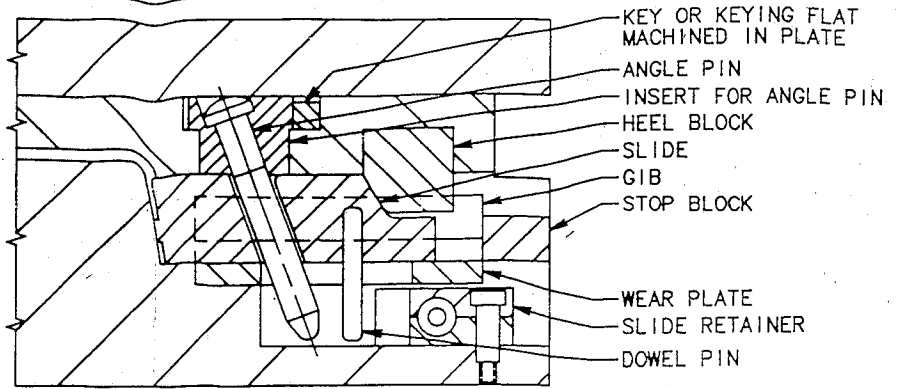
CATALOG NUMBER	"A" DIA. HOLE	"B" ANGLE	"C" LENGTH	"D" DIAMETER	"E" DIA. HEAD	"F" OFFSET	"G" DEPTH	
API-3101	.3765	10°	.875	.6250	.812	.062	.256	
API-3102			1.375	.7500	.938	.125		
API-3103			1.875	.7500	.938	.156		
API-3151		15°	.875	.7500	.938	.125		.264
API-3152			1.375	.8750	1.062	.188		
API-3153			1.875	1.0000	1.188	.250		
API-3201		20°	.875	.8750	1.062	.156		.275
API-3202			1.375	1.0000	1.188	.250		
API-3203			1.875	1.2500	1.438	.312		
API-4101		.5015	10°	.875	.7500	.938		.094
API-4102	1.375			.8750	1.062	.125		
API-4103	1.875			1.0000	1.188	.156		
API-4151	15°		.875	.8750	1.062	.125	.268	
API-4152			1.375	1.0000	1.188	.188		
API-4153			1.875	1.1250	1.312	.250		
API-4201	20°		.875	1.0000	1.188	.156	.283	
API-4202			1.375	1.1250	1.312	.250		
API-4203			1.875	1.3750	1.562	.312		
API-5101	.6265		10°	.875	.8750	1.062	.062	.260
API-5102		1.375		1.0000	1.188	.125		
API-5103		1.875		1.1250	1.312	.188		
API-5104		15°	2.375	1.2500	1.438	.219	.273	
API-5151			.875	1.0000	1.188	.125		
API-5152			1.375	1.1250	1.312	.188		
API-5153		1.875	1.2500	1.438	.250			
API-5154		2.375	1.3750	1.562	.312			
API-5201		20°	.875	1.1250	1.312	.156	.291	
API-5202			1.375	1.2500	1.438	.250		
API-5203	1.875		1.5000	1.688	.344			
API-5204	.7515	10°	2.375	1.6250	1.812	.438	.324	
API-6102			1.375	1.1250	1.312	.125		
API-6103			1.875	1.2500	1.438	.156		
API-6104		15°	2.375	1.3750	1.562	.188		.339
API-6152			1.375	1.2500	1.438	.188		
API-6153			1.875	1.3750	1.562	.250		
API-6154		2.375	1.5000	1.688	.312			
API-6202		20°	1.375	1.3750	1.562	.250		.361
API-6203			1.875	1.6250	1.812	.364		
API-6204			2.375	1.7500	1.938	.438		
API-8102	1.0015	10°	1.375	1.3750	1.562	.125	.328	
API-8103			1.875	1.5000	1.688	.188		
API-8104			2.375	1.6250	1.812	.219		
API-8105		15°	2.875	1.7500	1.938	.250		.348
API-8152			1.375	1.5000	1.688	.188		
API-8153			1.875	1.7500	1.938	.250		
API-8154		2.375	1.8750	2.062	.312			
API-8155		2.875	2.0000	2.188	.375			
API-8202		20°	1.375	1.7500	1.938	.250		.377
API-8203			1.875	1.8750	2.062	.344		
API-8204	2.375		2.0000	2.188	.438			
API-8205	2.875	2.2500	2.438	.531				

NOTES:

- D-M-E STANDARD INSERTS FOR ANGLE PINS ARE DESIGNED FOR USE WITH STANDARD D-M-E ANGLE PINS. THESE ANGLE PINS HAVE A SPHERICAL RADIUS ON THE TOP OF THE HEAD FOR INSTALLATION OF THE ANGLE PINS WITHOUT THE TYPICAL MACHINING REQUIRED TO THE HEAD.
- THESE PATENTED INSERTS ARE AVAILABLE WITH I.D. HOLES FOR EACH STANDARD SIZE D-M-E ANGLE PIN. THE INSERTS ARE AVAILABLE WITH THE I.D. HOLES AT 10°, 15° AND 20° ANGLES IN VARIOUS LENGTHS.
- THESE INSERTS FOR ANGLE PINS MUST BE KEYED FOR PROPER ALIGNMENT AND TO PREVENT THE INSERTS FROM ROTATING. MOLDBAKER TO SUPPLY AND INSTALL KEY OR MACHINE KEYING FLAT IN PLATE TO SUIT.

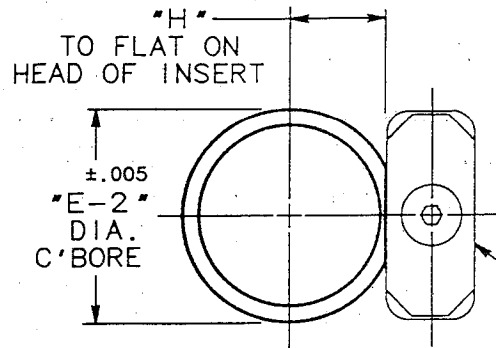
TYPICAL APPLICATION  
FOR D-M-E STANDARD  
INSERTS FOR ANGLE PINS:

U.S. PATENT NUMBER 5,234,329



CATALOG NUMBER	"C-2" PLT. THK.	"D-2" DIAMETER	"E-2" C'BORE	"H" HEAD FLAT
API-3101	.875	.6250	.875	.332
API-3102	1.375	.7500	1.000	.395
API-3103	1.875	.7500	1.000	.395
API-3151	.875	.7500	1.000	.395
API-3152	1.375	.8750	1.125	.457
API-3153	1.875	1.0000	1.250	.520
API-3201	.875	.8750	1.125	.457
API-3202	1.375	1.0000	1.250	.520
API-3203	1.875	1.2500	1.500	.650
API-4101	.875	.7500	1.000	.395
API-4102	1.375	.8750	1.125	.457
API-4103	1.875	1.0000	1.250	.520
API-4151	.875	.8750	1.125	.457
API-4152	1.375	1.0000	1.250	.520
API-4153	1.875	1.1250	1.375	.582
API-4201	.875	1.0000	1.250	.520
API-4202	1.375	1.1250	1.375	.582
API-4203	1.875	1.3750	1.625	.710
API-5101	.875	.8750	1.125	.457
API-5102	1.375	1.0000	1.250	.520
API-5103	1.875	1.1250	1.375	.582
API-5104	2.375	1.2500	1.500	.650
API-5151	.875	1.0000	1.250	.520
API-5152	1.375	1.1250	1.375	.582
API-5153	1.875	1.2500	1.500	.650
API-5154	2.375	1.3750	1.625	.710
API-5201	.875	1.1250	1.375	.582
API-5202	1.375	1.2500	1.500	.650
API-5203	1.875	1.5000	1.750	.770
API-5204	2.375	1.6250	1.875	.830
API-6102	1.375	1.1250	1.375	.582
API-6103	1.875	1.2500	1.500	.650
API-6104	2.375	1.3750	1.625	.710
API-6152	1.375	1.2500	1.500	.650
API-6153	1.875	1.3750	1.625	.710
API-6154	2.375	1.5000	1.750	.770
API-6202	1.375	1.3750	1.625	.710
API-6203	1.875	1.6250	1.875	.830
API-6204	2.375	1.7500	2.000	.890
API-8102	1.375	1.3750	1.625	.710
API-8103	1.875	1.5000	1.750	.770
API-8104	2.375	1.6250	1.875	.830
API-8105	2.875	1.7500	2.000	.890
API-8152	1.375	1.5000	1.750	.770
API-8153	1.875	1.7500	2.000	.890
API-8154	2.375	1.8750	2.125	.960
API-8155	2.875	2.0000	2.250	1.020
API-8202	1.375	1.7500	2.000	.890
API-8203	1.875	1.8750	2.125	.960
API-8204	2.375	2.0000	2.250	1.020
API-8205	2.875	2.2500	2.500	1.145

BASIC MACHINING DIMENSIONS  
FOR INSTALLING STANDARD  
D-M-E INSERTS FOR ANGLE PINS  
INTO A MOLD:



MOLDMAKER TO KEY INSERT—  
TO PREVENT IT FROM ROTATING.  
KEY AND OPTIONAL SCREW FOR  
RETAINING KEY TO BE SUPPLIED  
AND INSTALLED BY MOLDMAKER  
TO SUIT. OR A KEYING FLAT  
COULD BE MACHINED DIRECTLY IN  
THE PLATE, MOLDMAKER TO SUIT.

