

Technical Specifications

INJECTION UNIT	630 Frame								970 Frame							
	Metric	A	B	C	English	A	B	C	Metric	A	B	C	English	A	B	C
Injection Capacity, Maximum GPPS	gms	239	303	374	oz	8.4	10.7	13.2	gms	363	448	646	oz	12.8	15.8	22.8
Theoretical Displacement	cm ³	251	318	393	in ³	15.3	19.4	24.0	cm ³	382	471	679	in ³	23.3	28.7	41.4
Maximum Injection Pressure	bar	2492	1969	1595	psi	36100	28500	23100	bar	2249	2057	1428	psi	32600	29800	20700
Max Injection Rate	cm ³ /sec	107	135	167	in ³ /sec	6.5	8.2	10.2	cm ³ /sec	105	129	186	in ³ /sec	6.4	7.9	11.3
Screw Stroke	mm	200	200	200	in	7.9	7.9	7.9	mm	240	240	240	in	9.4	9.4	9.4
Screw Diameter	mm	40	45	50	in	1.57	1.77	1.97	mm	45	50	60	in	1.77	1.97	2.36
Screw L/D Ratio	L/D	25	22.2	20	L/D	25	22.2	20	L/D	26.7	24	20	L/D	26.7	24	20
Screw Speed	rpm	222	222	222	rpm	222	222	222	rpm	188	188	188	rpm	188	188	188
Screw Torque @172 bar	Nm	1,080	1,080	1,080	in-lb	9,800	9,800	9,800	Nm	1,305	1,305	1,305	in-lb	11,800	11,800	11,800
Plasticizing Rate GPPS	gm/sec	15	20	33	oz/sec	0.5	0.7	1.2	gm/sec	17	28	43	oz/sec	0.6	1.0	1.5
Number of Pyrometers (Barrel/Nozzle)	qty	4/1			qty	4/1			qty	4/1			qty	4/1		
Total Heat Capacity	kW	15.7			kW	15.7			kW	16.9			kW	16.9		

CLAMP

Clamping Force	kN	1500			ton	168			kN	1500			ton	168		
Opening Force	kN	150			ton	16			kN	150			ton	16		
Clamp Stroke	mm	440			in	17.3			mm	440			in	17.3		
Maximum Daylight	mm	950			in	37.4			mm	950			in	37.4		
Minimum Mold Height	mm	150			in	5.9			mm	150			in	5.9		
Maximum Mold Height	mm	510			in	20.1			mm	510			in	20.1		
Platen Size (H × V)	mm	740 × 740			in	29.1 × 29.1			mm	740 × 740			in	29.1 × 29.1		
Distance Between Tie Rods	mm	510 × 510			in	20.1 × 20.1			mm	510 × 510			in	20.1 × 20.1		
Minimum Mold Area	mm	340 × 340			in	13.4 × 13.4			mm	340 × 340			in	13.4 × 13.4		
Tie Rod Diameter	mm	85			in	3.3			mm	85			in	3.3		
Ejector Stroke	mm	130			in	5.1			mm	130			in	5.1		
Ejector Force	kN	44			ton	4.9			kN	44			ton	4.9		
Maximum Mold Weight	kg	1,500			lbs	3,307			kg	1,500			lbs	3,307		
Dry Cycle Time (Euromap 6)	sec-mm	2.5 - 357			sec - in	2.5 - 14.1			sec-mm	2.5 - 357			sec - in	2.5 - 14.1		

GENERAL

Electrical Motor	kW	11.5			hp	15.4			kW	11.5			hp	15.4		
Total Oil Capacity	L	415			gal	110			L	415			gal	110		
Water Supply (29°C Inlet Temp)	L/min	50			gal/min	13.2			L/min	50			gal/min	13.2		
Connected Load	kW	27.2			kW	27.2			kW	28.4			kW	28.4		
Overall Dimensions (L × W × H)	m	5.5 × 1.6 × 2.5			ft	18.0 × 5.2 × 8.2			m	5.5 × 1.6 × 2.5			ft	18.0 × 5.2 × 8.2		
Machine Weight	kg	6,450			lbs	14,220			kg	6,800			lbs	14,991		

***Note: All machine dimensions and specifications are subject to change. Values are for reference only.

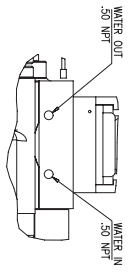
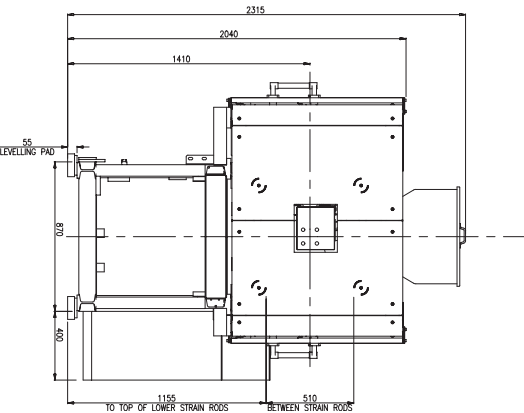
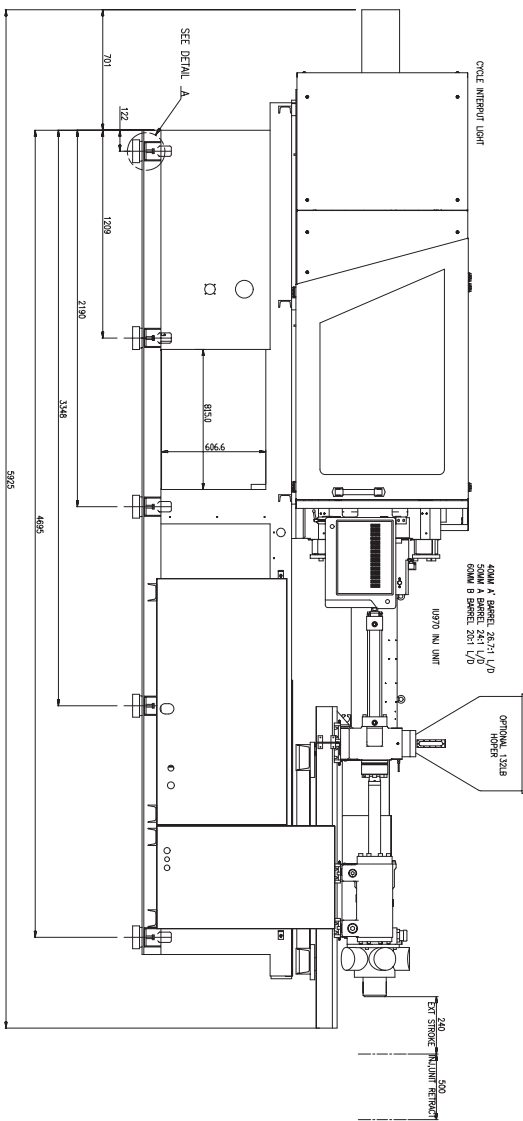
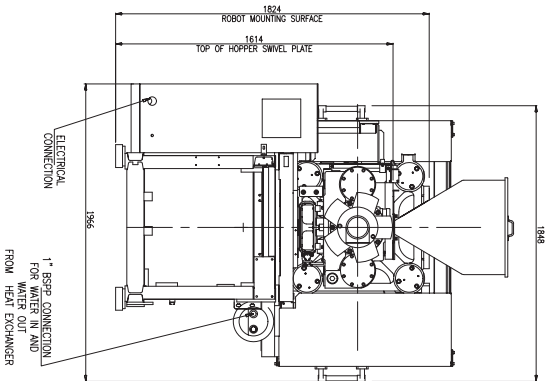
MAGNA T

170 970

GENERAL ASSEMBLY DRAWINGS



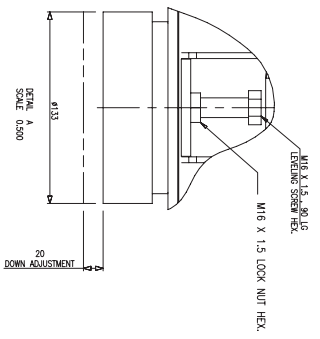
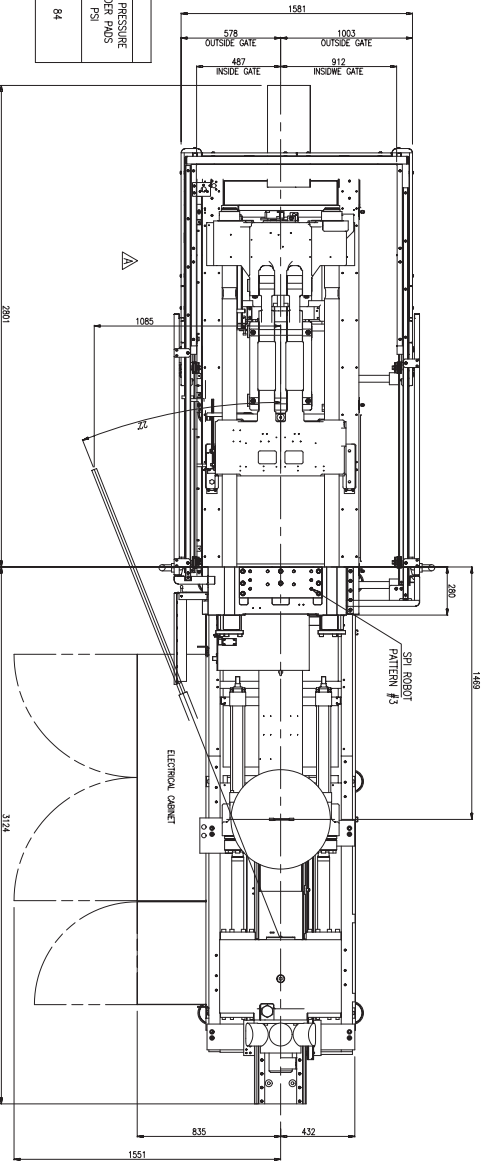
MILACRON®



TOTAL MACHINE WEIGHT (NO MOLD):
 DRY 7,800 KG /16,755 LBS /8,377 US TONS
 WITH OIL 7,957 KG /17,542 LBS /8,771 US TONS

WEIGHTS		WEIGHT WITH OIL (NO MOLD)	
KG	LB	# OF LEVELING PADS	AVG PRESSURE UNDER PADS N/cm ²
7,957	17,542	10	57
			AVG PRESSURE UNDER PADS PSI
			84

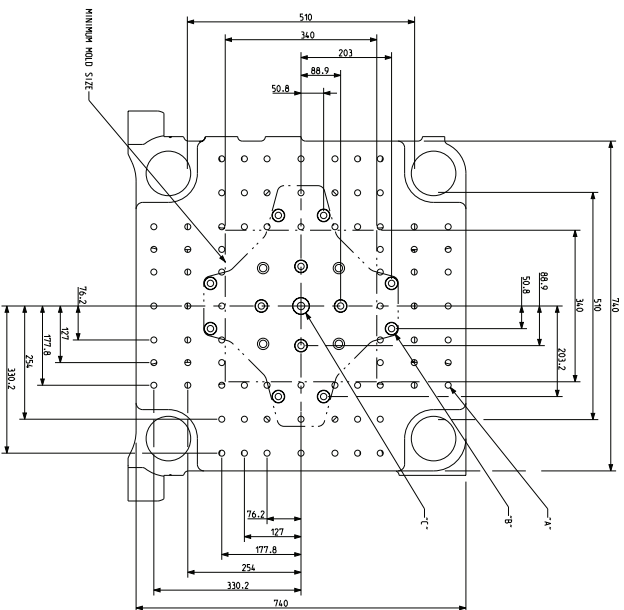
MAXIMUM LEVELING MOUNT LOAD:
 1,300 KG



GENERAL ASSEMBLY MTS-170 WITH 970 INU UNIT

MAGNA T 170

DIE SPACE DRAWINGS



MOVING PLATEN VIEW
SECTION A-A

- HOLE DESCRIPTION:
- "A" - Ø.531", 1.78" DEEP, .625-11UNC-2B, 1.22" DEEP (80) HOLES MOVING PLATEN, (80) HOLES STATIONARY PLATEN
 - "B" - Ø27.0 (1.063") THRU, (12) HOLES 0.8x45° BOTH SIDE
 - "B'" - CORRESPONDING HOLES IN K/O M16 THRU (12) HOLES
 - "C" - Ø36.53 (1.438") THRU, 0.8x45° CHAMFER BOTH SIDE
 - "C'" - CORRESPONDING HOLE IN K/O M 16 THRU, .750"-10 UNC-2B THRU

