

Technical Specifications

MTs 500 Specifications with 25.1kw (13.6kw + 11.5kw) 2 Motor

INJECTION UNIT	2290 Frame								3470 Frame							
	Metric	A	B	C	English	A	B	C	Metric	A	B	C	English	A	B	C
Injection Capacity, Maximum GPPS	gms	861	1172	1530	oz	30.4	41.3	54	gms	1318	1722	2179	oz	46.5	60.7	76.9
Theoretical Displacement	cm ³	905	1232	1608	in ³	55.2	75.2	98.1	cm ³	1385	1810	2290	in ³	84.5	110.4	139.7
Maximum Injection Pressure	bar	2238	1856	1421	psi	32459	26919	20609	bar	2289	1917	1515	psi	33199	27803	21973
Injection Rate	cm ³ /sec	270	367	480	in ³ /sec	16.5	22.4	29.3	cm ³ /sec	272	356	450	in ³ /sec	16.6	21.7	27.5
Screw Stroke	mm	320	320	320	in	12.6	12.6	12.6	mm	360	360	360	in	14.2	14.2	14.2
Screw Diameter	mm	60	70	80	in	2.36	2.76	3.15	mm	70	80	90	in	2.76	3.15	3.54
Screw L/D Ratio	L/D	26.7	22.9	20	L/D	26.7	22.9	20	L/D	25.7	22.5	20	L/D	22.5	23	21
Screw Speed	rpm	187	187	187	rpm	187	187	187	rpm	146	146	146	rpm	146	146	146
Screw Torque @172 bar	Nm	3347	3347	3347	in-lb	29623	29623	29623	Nm	4291	4291	4291	in-lb	37978	37978	37978
Plasticizing Rate (Barrier Screw)*	gm/sec	43	69	93	oz/sec	1.52	2.4	3.28	gm/sec	53	72	97	oz/sec	1.87	2.54	3.42
Number of Pyrometers (Barrel/Nozzle)	qty	4/1			qty	4/1			qty	4/1			qty	4/1		
Total Heat Capacity	kW	39.6			kW	39.6			kW	57.9			kW	57.9		

CLAMP

Clamping Force	kN	4500			ton	505			kN	4500			ton	505		
Opening Force	kN	450			ton	51			kN	450			ton	51		
Clamp Stroke	mm	820			in	32.3			mm	820			in	32.3		
Maximum Daylight	mm	1640			in	64.6			mm	1640			in	64.6		
Minimum Mold Height	mm	350			in	13.8			mm	350			in	13.8		
Maximum Mold Height	mm	820			in	32.3			mm	820			in	32.3		
Platen Size (H x V)	mm	1200 x 1200			in	47.2 x 47.2			mm	1200 x 1200			in	47.2 x 47.2		
Distance Between Tie Rods	mm	830 x 830			in	32.7 x 32.7			mm	830 x 830			in	32.7 x 32.7		
Minimum Mold Area	mm	553 x 553			in	21.8 x 21.8			mm	553 x 553			in	21.8 x 21.8		
Tie Rod Diameter	mm	150			in	5.9			mm	150			in	5.9		
Ejector Stroke	mm	200			in	7.9			mm	200			in	7.9		
Ejector Force	kN	117			ton	11.9			kN	117			ton	11.9		
Maximum Mold Weight	kg	5,725			lbs	12,621			kg	5,725			lbs	12,621		
Dry Cycle Time (Euromap 6) With EOF / Without EOF	sec	5.3 / 3.48			sec	5.3 / 3.48			sec	5.3 / 3.48			sec	5.3 / 3.48		

GENERAL

Electrical Motor	kW	25.1			hp	50			kW	25.1			hp	50		
Total Oil Capacity	L	750			gal	198.1			L	750			gal	198.1		
Water Supply (29°C Inlet Temp)	L/min	100			gal/min	26.4			L/min	100			gal/min	26.4		
Connected Load	kW	76.6			kW	76.6			kW	83			kW	83		
Overall Dimensions (L x W x H)	m	8.9 x 3.0 x 2.6			ft	29.2 x 9.8 x 8.5			m	9.5 x 3.0 x 2.6			ft	31.2 x 9.8 x 8.5		
Machine Weight	kg	27,000			lbs	59,524			kg	28,000			lbs	61,729		

***Note: All machine dimensions and specifications are subject to change. Values are for reference only.

Technical Specifications

MTs 500 Specifications with 36.6kw (13.6kw + 11.5kw + 11.5kw) 3 Motor

INJECTION UNIT	2290 Frame								3470 Frame							
	Metric	A	B	C	English	A	B	C	Metric	A	B	C	English	A	B	C
Injection Capacity, Maximum GPPS	gms	861	1172	1530	oz	30.4	41.3	54	gms	1318	1722	2179	oz	46.5	60.7	76.9
Theoretical Displacement	cm ³	905	1232	1608	in ³	55.2	75.2	98.1	cm ³	1385	1810	2290	in ³	84.5	110.4	139.7
Maximum Injection Pressure	bar	2238	1856	1421	psi	32459	26919	20609	bar	2289	1917	1515	psi	33199	27803	21973
Injection Rate	cm ³ /sec	367	500	653	in ³ /sec	22.3	30.5	39.8	cm ³ /sec	371	484	613	in ³ /sec	22.6	29.5	37.4
Screw Stroke	mm	320	320	320	in	12.6	12.6	12.6	mm	360	360	360	in	14.2	14.2	14.2
Screw Diameter	mm	60	70	80	in	2.36	2.76	3.15	mm	70	80	90	in	2.76	3.15	3.54
Screw L/D Ratio	L/D	26.7	22.9	20	L/D	26.7	22.9	20	L/D	25.7	22.5	21	L/D	22.5	23	21
Screw Speed	rpm	255	255	255	rpm	255	255	255	rpm	199	199	199	rpm	199	199	199
Screw Torque @172 bar	Nm	3347	3347	3347	in-lb	29623	29623	29623	Nm	4291	4291	4291	in-lb	37978	37978	37978
Plasticizing Rate (Barrier Screw)*	gm/sec	59	93	126	oz/sec	1.87	3.28	4.44	gm/sec	73	98	125	oz/sec	2.58	3.46	4.41
Number of Pyrometers (Barrel/Nozzle)	qty	4/1			qty	4/1			qty	4/1			qty	4/1		
Total Heat Capacity	kW	39.6				39.6				57.9				57.9		

CLAMP

Clamping Force	kN	4500			ton	505			kN	4500			ton	505		
Opening Force	kN	450			ton	51			kN	450			ton	51		
Clamp Stroke	mm	820			in	32.3			mm	820			in	32.3		
Maximum Daylight	mm	1640			in	64.6			mm	1640			in	64.6		
Minimum Mold Height	mm	350			in	13.8			mm	350			in	13.8		
Maximum Mold Height	mm	820			in	32.3			mm	820			in	32.3		
Platen Size (H x V)	mm	1200 x 1200			in	47.2 x 47.2			mm	1200 x 1200			in	47.2 x 47.2		
Distance Between Tie Rods	mm	830 x 830			in	32.7 x 32.7			mm	830 x 830			in	32.7 x 32.7		
Minimum Mold Area	mm	553 x 553			in	21.8 x 21.8			mm	553 x 553			in	21.8 x 21.8		
Tie Rod Diameter	mm	150			in	5.9			mm	150			in	5.9		
Ejector Stroke	mm	200			in	7.9			mm	200			in	7.9		
Ejector Force	kN	117			ton	11.9			kN	117			ton	11.9		
Maximum Mold Weight	kg	5,725			lbs	12,621			kg	5,725			lbs	12,621		
Dry Cycle Time (Euromap 6)	sec	3.48			sec	3.48			sec	3.48			sec	3.48		

GENERAL

Electrical Motor	kW	36.6			hp	49.1			kW	36.6			hp	49.1		
Total Oil Capacity	L	750			gal	198.1			L	750			gal	198.1		
Water Supply (29°C Inlet Temp)	L/min	100			gal/min	26.4			L/min	100			gal/min	26.4		
Connected Load	kW	76.2			kW	76.2			kW	94.5			kW	94.5		
Overall Dimensions (L x W x H)	m	8.9 x 3.0 x 2.6			ft	29.2 x 9.8 x 8.5			m	9.5 x 3.0 x 2.6			ft	31.2 x 9.8 x 8.5		
Machine Weight	kg	27,000			lbs	59,524			kg	28,000			lbs	61,729		

***Note: All machine dimensions and specifications are subject to change. Values are for reference only.

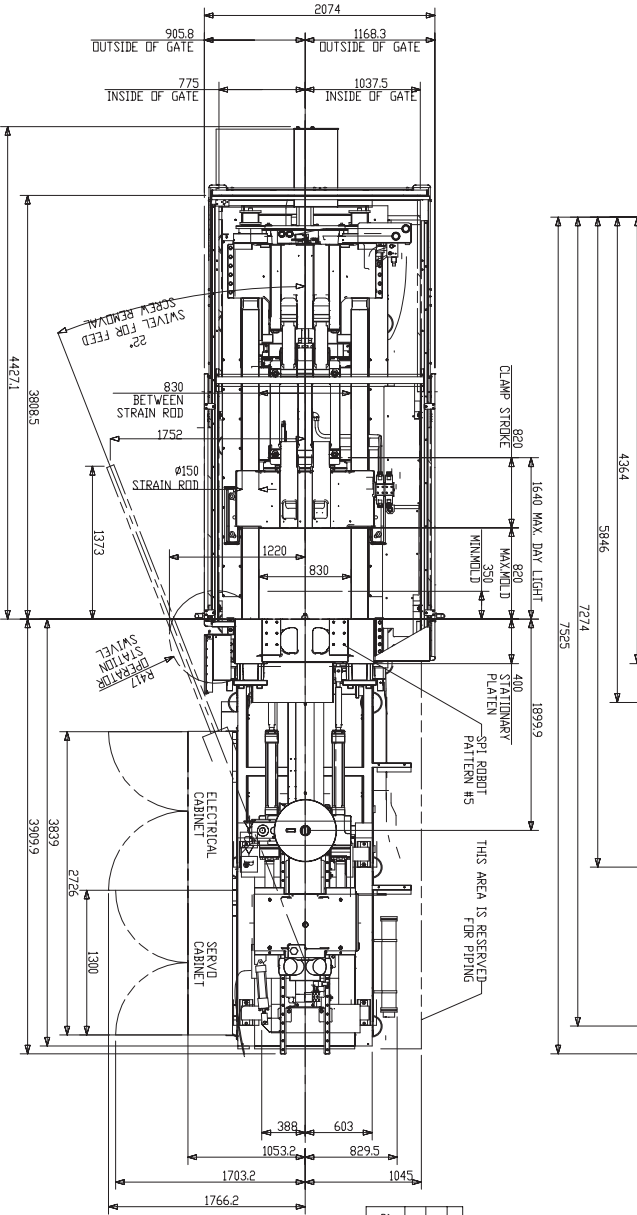
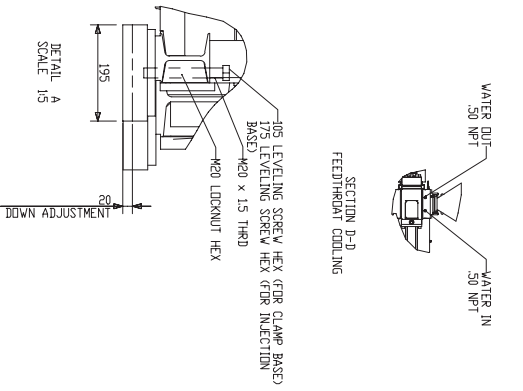
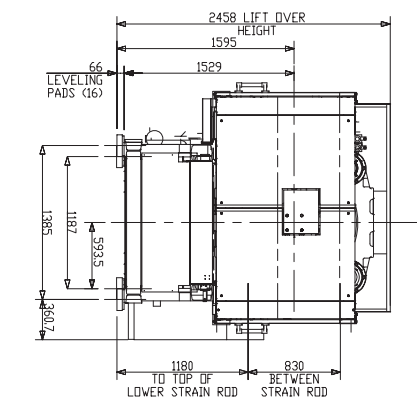
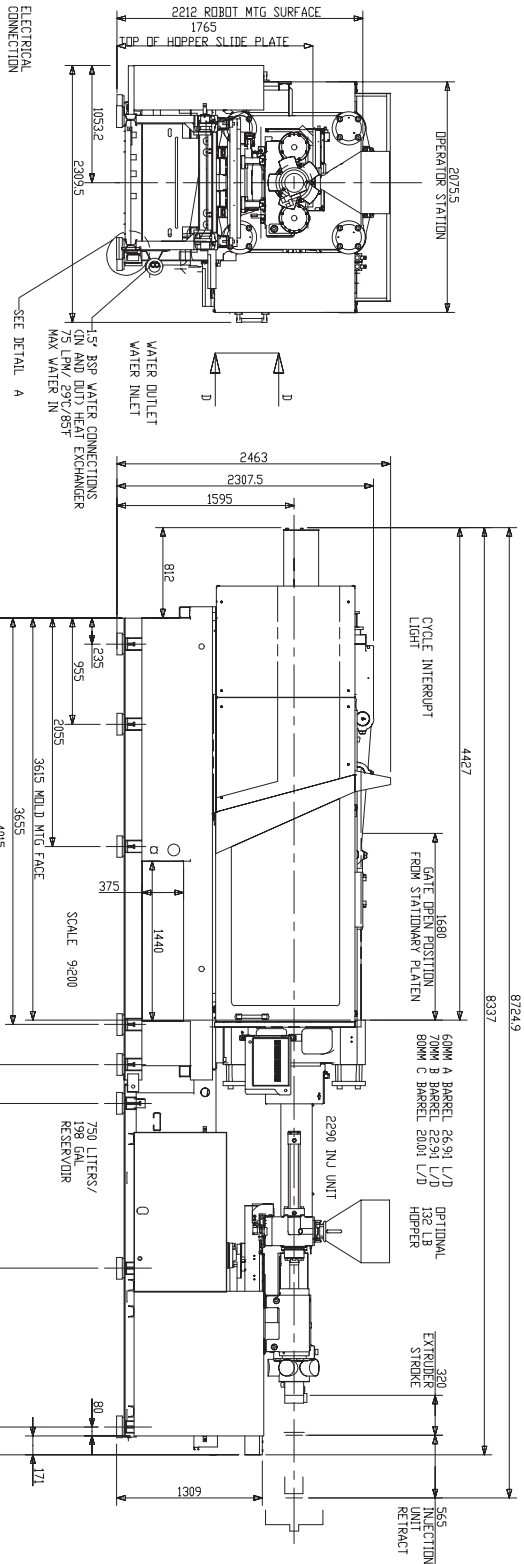
MAGNA T

500 2290

GENERAL ASSEMBLY DRAWINGS



MILACRON®



MAXIMUM LEVELING MOMENT LOAD:
1814 KG/4000 LB

TOTAL MACHINE WEIGHT (NO MOLD):
27,000 KG/59,524 LB (23,762 US TONS)
27,645 KG/60,957 LB (24,073 US TONS)

DRY WEIGHT: 27,000 KG/59,524 LB (23,762 US TONS)
WITH OIL: 27,645 KG/60,957 LB (24,073 US TONS)

WEIGHTS		WEIGHT WITH OIL (NO MOLD)		
KG	LB	# OF LEVELING PADS	AVG PRESSURE UNDER PADS (N/cm ²)	AVG PRESSURE UNDER PADS (PSI)
27,645	60,957	16	58	85

GENERAL ASSEMBLY MT-S-500-2290 INJ UNIT

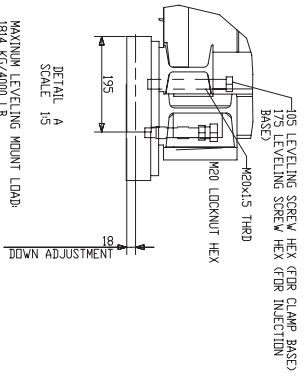
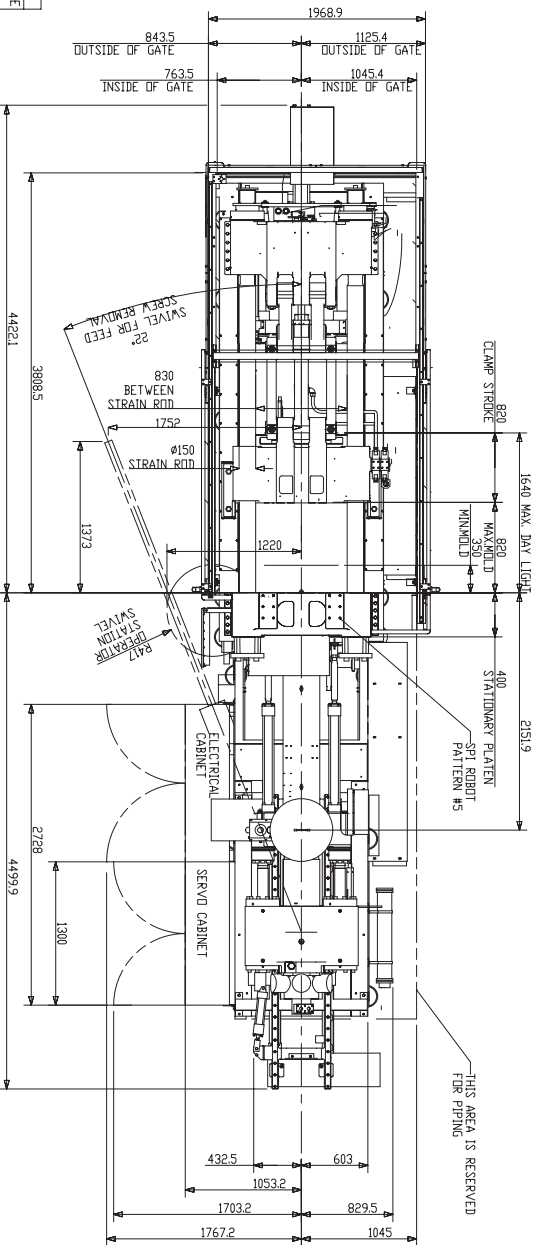
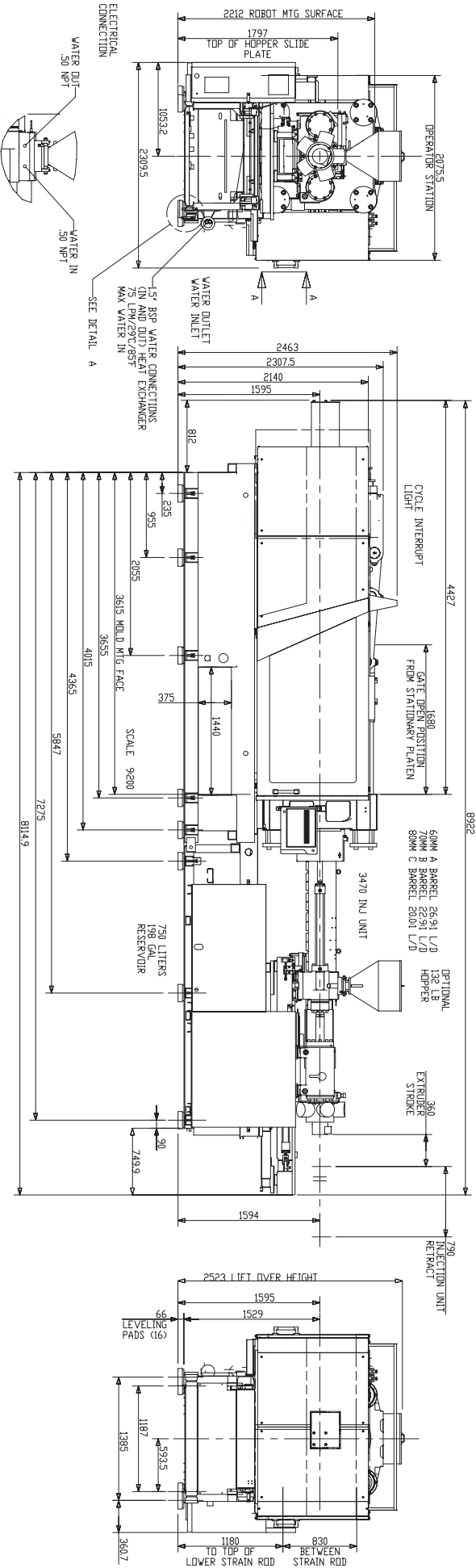
MAGNA T

500 3470

GENERAL ASSEMBLY DRAWINGS



MILACRON®



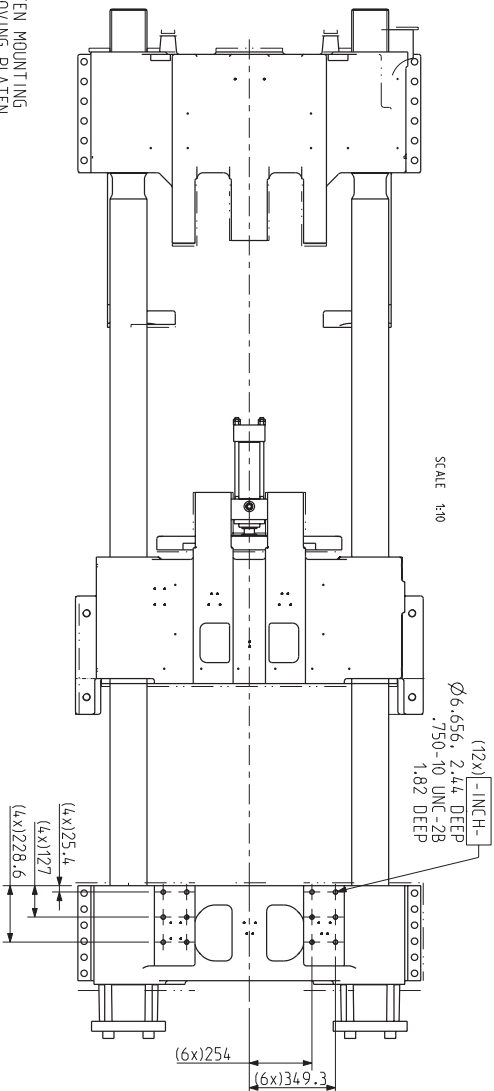
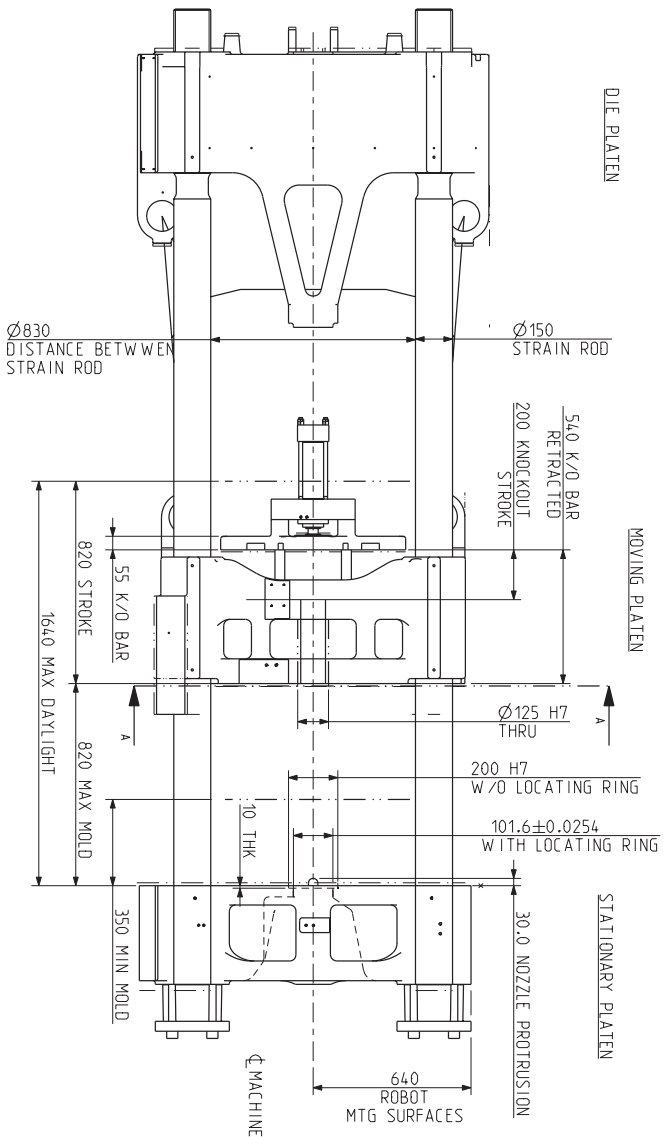
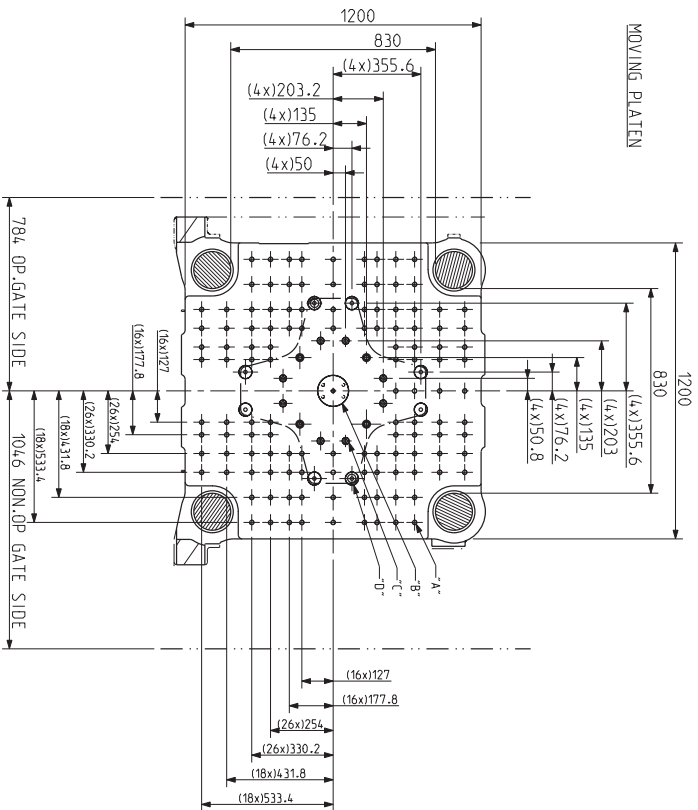
WEIGHTS		WEIGHT WITH OIL (NO M.O.D.)	
KG	LB	Avg Pressure Under Pads N/cm ²	Avg Pressure Under Pads PSI
28,645	63,151	16	60
			88

MAGNA T 500

DIE SPACE DRAWINGS



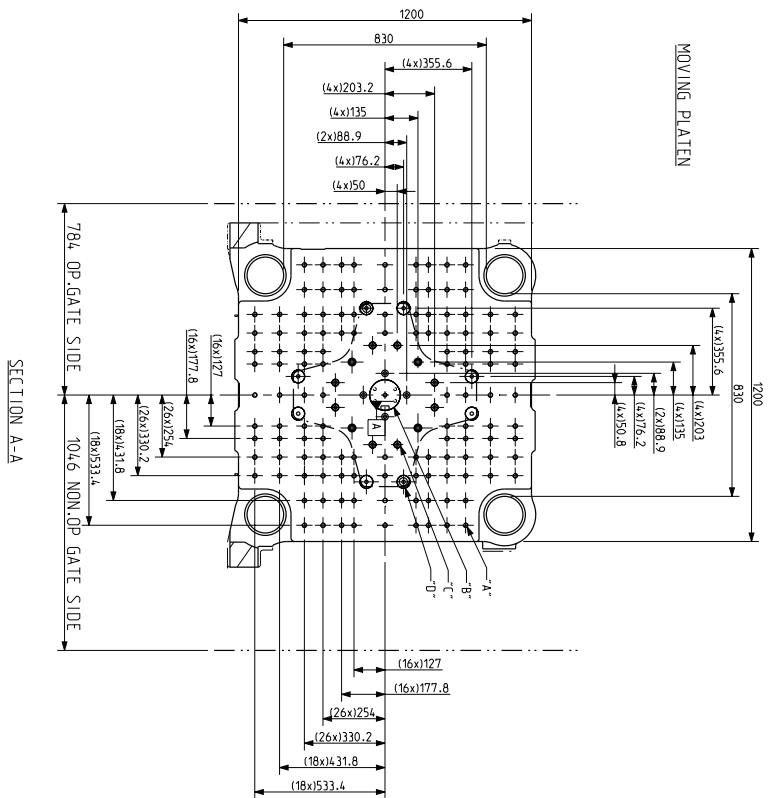
MILACRON®



- *A* 0.750-10 UNC-2B, 1.44 DEEP (128xON MOVING PLATEN) (128xON STATIONARY PLATEN)
- *B* MOVING PLATEN 125 THRU BORE K/O BAR CENTER HOLE M16 THRU STATIONARY PLATEN 160 WITH LOCATING RING 200 W/O LOCATING RING
- *C* 27 THRU (12) HOLE K/O BAR HOLE M16 THRU (20) HOLES
- *D* 52.4 THRU (8) HOLES

NOTE:
STATIONARY PLATEN MOUNTING HOLES SAME AS MOVING PLATEN

SCALE 1:10



SECTION A-A

- *A* 0.750-10 UNC-2B, 1.44 DEEP (128XON MOVING PLATEN)
(128XON STATIONARY PLATEN)
- *B* MOVING PLATEN
Ø125 THRU BORE
K/O BAR CENTER M16
- STATIONARY PLATEN
Ø101.6 WITH LOCATING RING
Ø200 W/O LOCATING RING
- *C* Ø27 THRU (12) HOLE
K/O BAR M16 (20)
- *D* Ø52.4 THRU (8) HOLES

