

Technical Specifications

INJECTION UNIT	32mm Frame								40mm Frame							
	Metric	A	B	C	English	A	B	C	Metric	A	B	C	English	A	B	C
Injection Capacity, Maximum GPPS	gms	99	125	171	oz	3.5	4.4	6.0	gms	215	272	336	oz	7.5	9.6	11.8
Theoretical Displacement	cm ³	104	132	180	in ³	6.3	8.0	10.9	cm ³	226	286	353	in ³	13.7	17.4	21.5
Maximum Injection Pressure	bar	2074	1639	1204	psi	29620	23410	17200	bar	1901	1502	1217	psi	27150	21450	17380
Injection Rate	cm ³ /sec	105	133	180	in ³ /sec	6.4	8.1	10.9	cm ³ /sec	130	165	204	in ³ /sec	7.9	10.0	12.4
Screw Stroke	mm	130	130	130	in	5.12	5.12	5.12	mm	180	180	180	in	7.09	7.09	7.09
Screw Diameter	mm	32	36	42	in	1.26	1.42	1.65	mm	40	45	50	in	1.57	1.77	1.97
Screw L/D Ratio	L/D	22.6	20	17	L/D	22.6	20	17	L/D	22.5	20	18	L/D	22.5	20	18
Screw Speed	rpm	333	333	333	rpm	333	333	333	rpm	258	258	258	rpm	258	258	258
Screw Torque	Nm	676	676	676	in-lb	5983	5983	5983	Nm	863	863	863	in-lb	7638	7638	7638
At Pressure	bar	172	172	172	psi	2494	2494	2494	bar	172	172	172	psi	2494	2494	2494
Plasticizing Rate GPPS	gm/sec	12	16	24	oz/sec	0.4	0.5	0.8	gm/sec	16	22	30	oz/sec	0.5	0.7	1.0
Number of Pyrometers (Barrel/Nozzle)	qty	3/1			qty	3/1			qty	3/1			qty	3/1		
Total Heat Capacity	kW	7.3			kW	7.3			kW	13.1			kW	13.1		

CLAMP

Clamping Force	kN	800			ton	90			kN	800			ton	90		
Clamp Stroke	mm	310			in	12.2			mm	310			in	12.2		
Maximum Daylight	mm	710			in	28.0			mm	710			in	28.0		
Minimum Mold Height	mm	150			in	5.91			mm	150			in	5.91		
Maximum Mold Height	mm	400			in	15.75			mm	400			in	15.75		
Platen Size (H x V)	mm	610 x 565			in	24.02 x 22.24			mm	610 x 565			in	24.02 x 22.24		
Distance Between Tie Rods	mm	405 x 360			in	15.94 x 14.17			mm	405 x 360			in	15.94 x 14.17		
Tie Rod Diameter	mm	70			in	2.8			mm	70			in	2.8		
Ejector Stroke	mm	120			in	4.7			mm	120			in	4.7		
Ejector Force	kN	3.4			ton	3.7			kN	3.4			ton	3.7		
Dry Cycle Time (Euromap 6)	sec	2.65			sec	2.65			sec	2.65			sec	2.65		

GENERAL

Electrical Motor	kW	13.2			hp	18			kW	13.2			hp	18		
Total Oil Capacity	L	220			gal	58			L	220			gal	58		
Water Supply (29°C Inlet Temp)	L/min	40			gal/min	11			L/min	40			gal/min	11		
Connected Load	kW	20.5			kW	20.5			kW	26.3			kW	26.3		
Overall Dimensions (L x W x H)	m	3.8 x 1.4 x 2.1			ft	12.5 x 4.6 x 6.9			m	3.8 x 1.4 x 2.1			ft	12.5 x 4.6 x 6.9		
Machine Weight	kg	3,152			lbs	6,947			kg	3,152			lbs	6,947		

***Note: All machine dimensions and specifications are subject to change. Values are for reference only.

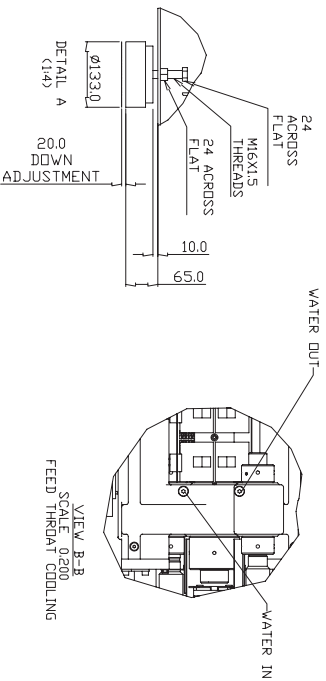
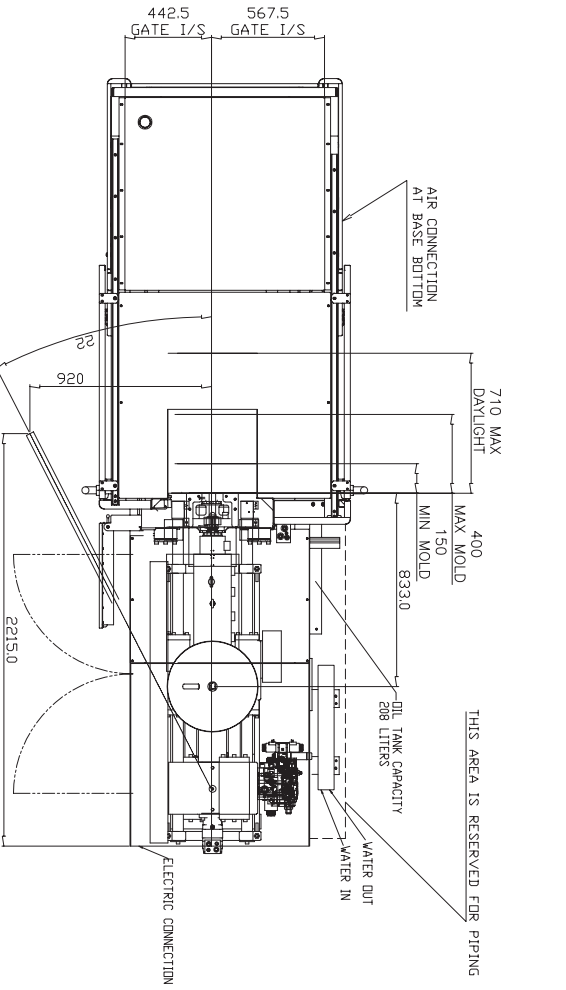
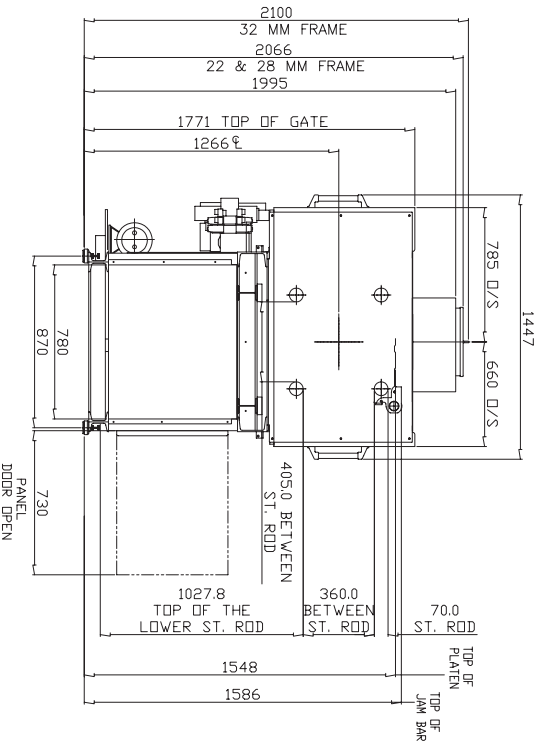
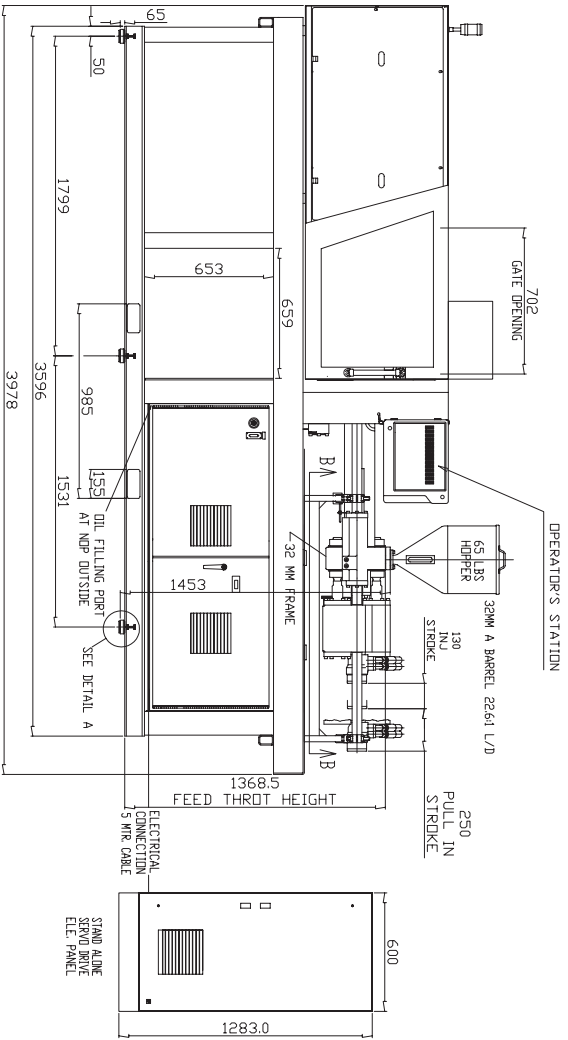
MAGNA T 90

28-32

GENERAL ASSEMBLY DRAWINGS



MILACRON®



TOTAL MACHINE WEIGHT (AND MOLD)
 DRY 8904 KG/ 19521 LBS/ 44.25 US TON
 WITH OIL 4039 KG/ 8904 LBS/ 44.45 US TON

WEIGHT	WEIGHT WITH OIL	# NO. MOLD	AVERAGE PRESSURE UNDER PADS	AVERAGE PRESSURE UNDER PADS
KG	LB	LEVELLING PADS	N/CM ²	PSI
8904	19521	6	475	690

LEVEL PADS (5MT PART NO): S311370-1
 LOAD RANGE: 700-1300 KG

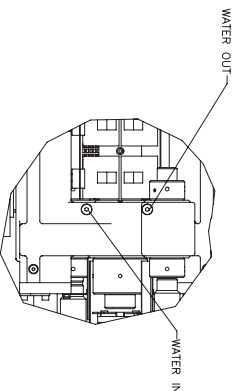
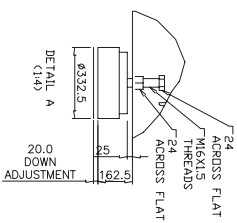
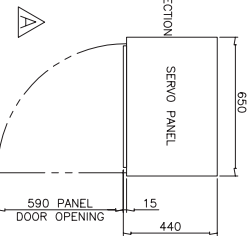
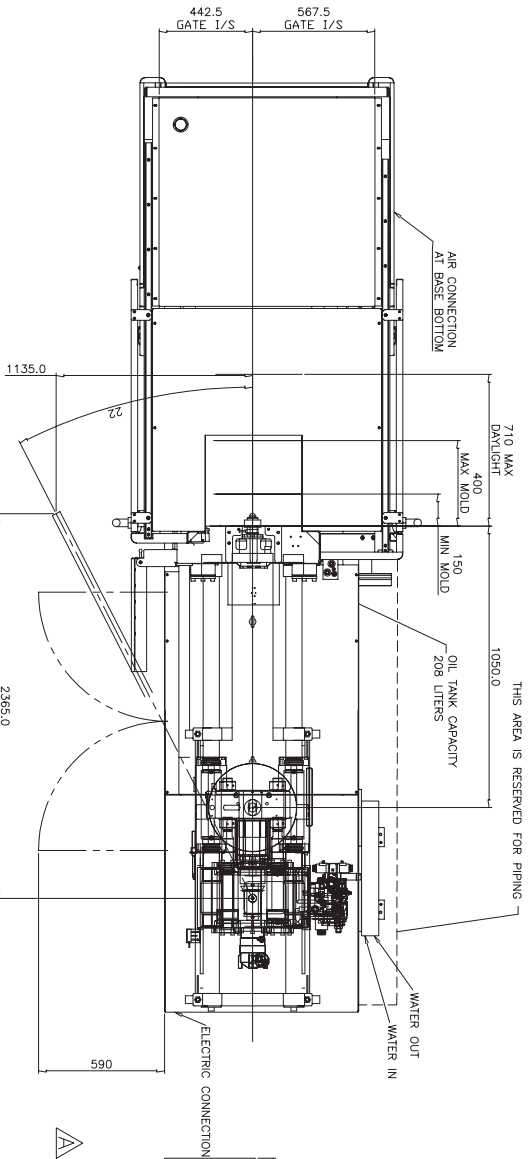
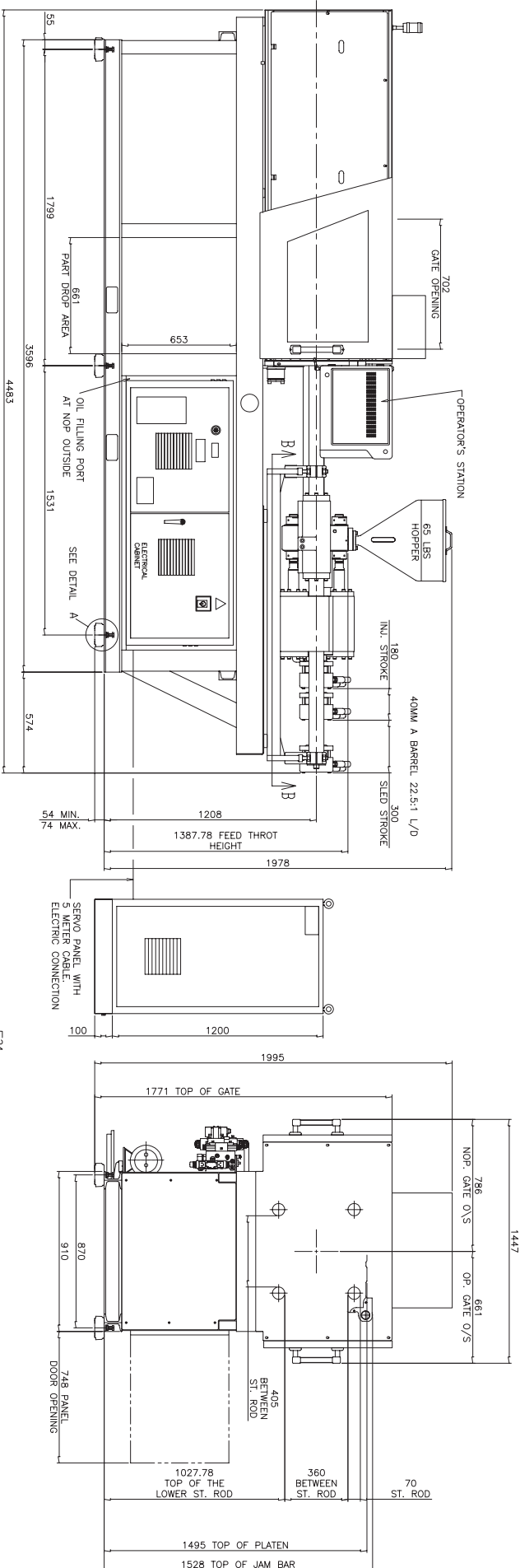
MAGNA T 90

40

GENERAL ASSEMBLY DRAWINGS



MILACRON®



VIEW B-B
SCALE 0:200
FEED THROAT COOLING

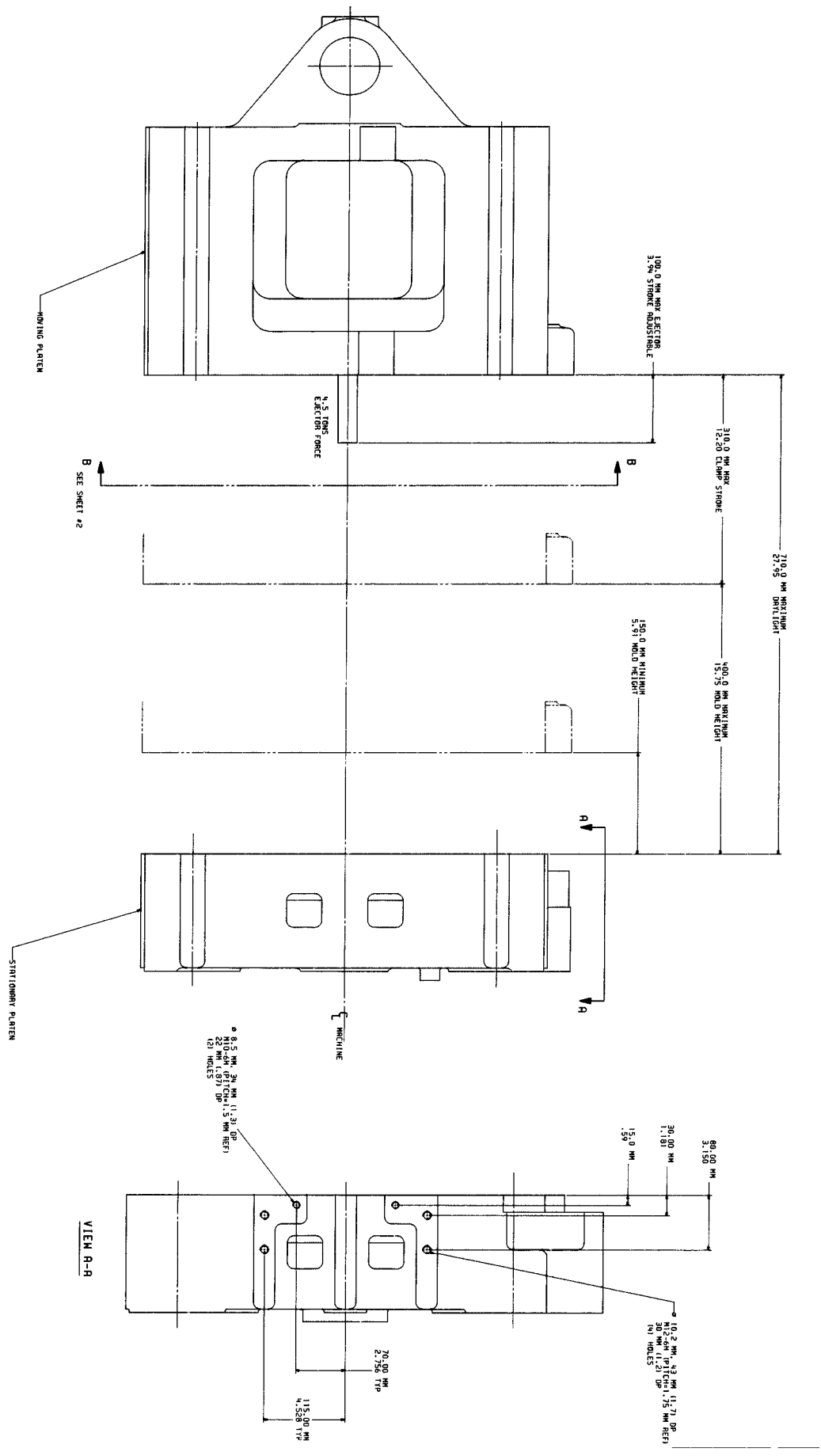
TOTAL MACHINE WEIGHT (NO MOLD)
DRY 4289 KG/ 9455 LBS/ 4.73 US TON
WITH OIL 4476 KG/ 9868 LBS/ 4.93 US TON

WEIGHT		WEIGHT WITH OIL, NO MOLD		LEVEL PADS (FMI PART N.D.) 531370-1	
KG	LB	# PADS	AVERAGE PRESSURE UNDER PADS N/C/M2	AVERAGE PRESSURE UNDER PADS PSI	LEAD RANGE
4289	9455	6	527	76.5	700-1300 KG
4476	9868	6	527	76.5	

LEVEL PADS (FMI PART N.D.) 531370-1
LEAD RANGE: 700-1300 KG

MAGNA T 90

DIE SPACE DRAWINGS



MAGNA T 90

DIE SPACE DRAWINGS

