



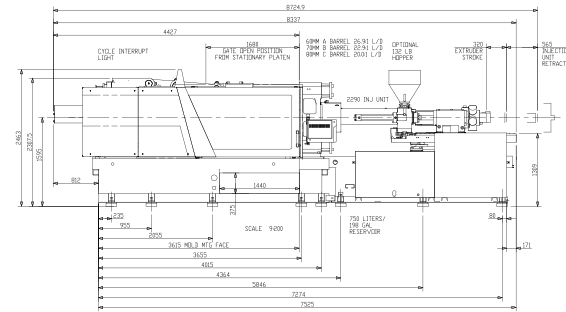
# MAGNA

## TOGGLE SERIES

Tonnage: 500 (3-Motor)

Frame Sizes:  
2290, 3470

## TECHNICAL SPECIFICATIONS



		2290 Frame			3470 Frame		
	ENGLISH METRIC	A	B	C	A	B	C
<b>General</b>							
Electrical Motor	hp kW		49 36.6			49 36.6	
Total Oil Capacity	gal L		198 750			198 750	
Water Supply (29°C Inlet Temp)	gal/min L/min		26.4 100			26.4 100	
Connected Load	kW		76.2			94.5	
Overall Dimensions (L x W x H)	ft m		29.1 x 9.8 x 8.5 8.9 x 2.4 x 2.5			31.1 x 9.8 x 8.5 9.5 x 2.4 x 2.6	
Machine Weight	lbs kg		59,524 27,000			61,729 28,000	
<b>Injection Unit Specifications</b>							
Injection Capacity, Maximum GPPS	oz gms	30.4 861	41.3 1,172	54 1,530	46.5 1,318	60.7 1,722	76.9 2,179
Theoretical Displacement	in <sup>3</sup> cm <sup>3</sup>	55.2 905	75.2 1,232	98.1 1,608	84.5 1,385	110.4 1,810	139.7 2,290
Maximum Injection Pressure	psi bar	32,459 2,238	26,909 1,856	20,609 1,421	33,199 2,289	27,803 1,917	21,973 1,515
Injection Rate	in <sup>3</sup> /sec cm <sup>3</sup> /sec	22.3 367	30.5 500	39.8 653	22.6 371	29.5 484	37.4 613
Injection Velocity	in/sec mm/sec		5.1 130			3.8 97	
Screw Stroke	in mm		12.5 320			14.1 360	
Back Pressure Limits	psi bar		500 34.4			500 34.4	
Screw Diameter	in mm	2.36 60	2.76 70	3.15 80	2.76 70	3.15 80	3.54 90
Screw L/D Ratio	L/D	26.7	22.9	20	25.7	22.5	21
Screw Speed	rpm		255			199	
Screw Torque @172 bar	in-lb Nm		29,623 3,347			37,978 4,291	
Plasticizing Rate (GPPS)	oz/sec gm/sec	2.0 59	3.2 93	4.4 126	2.5 73	3.4 99	4.4 125
Number of Pyrometers (Barrel/Nozzle)	qty		4/1			4/1	
Total Heat Capacity	kW		39.6			57.9	

©2017 Milacron LLC. All Rights Reserved.  
Pub Number: T4.1010.A.08.17

4165 Half Acre Rd.,  
Batavia OH 45103  
513.536.2000  
info@milacron.com  
www.milacron.com

		2290 Frame			3470 Frame		
	ENGLISH METRIC	A	B	C	A	B	C
<b>Clamp</b>							
Clamping Force	ton kN		505 4,500			505 4,500	
Opening Force	ton kN		45.1 450			45.1 450	
Clamp Stroke	in mm		32.2 820			32.2 820	
Clamp Close Velocity	in/sec cm/sec		27.5 700			27.5 700	
Clamp Open Velocity	in/sec cm/sec		19.6 500			19.6 500	
Eject Force (forward)	tons kN		11.9 117			11.9 117	
Eject Velocity (forward)	in/sec cm/sec		4.92 125			4.92 125	
Eject Velocity (retract)	in/sec cm/sec		8.27 210			8.27 210	
Ejector Stroke	in mm		7.9 200			7.9 200	
Mold Protect Pressure	psi bar		986 68			986 68	
Maximum Daylight	in mm		64.6 1,640			64.6 1,640	
Minimum Mold Height	in mm		13.8 350			13.8 350	
Maximum Mold Height	in mm		32.3 820			32.3 820	
Maximum Mold Weight	lbs kg		12,621 5,725			12,621 5,725	
Platen Size (H x V)	in mm		47.2 x 47.2 1,200 x 1,200			47.2 x 47.2 1,200 x 1,200	
Distance Between Tie Rods	in mm		32.7 x 32.7 830 x 830			32.7 x 32.7 830 x 830	
Tie Rod Diameter	in mm		5.9 150			5.9 150	
Dry Cycle Time (Euromap 6)	sec		3.48			3.48	

#### Notes

1) All machine dimensions and specifications are subject to change. Values are for reference only. All general assembly drawings or visuals included herein are for reference only. Please consult the general assembly drawing from a Milacron representative.



# MAGNA

## TOGGLE SERIES

**Tonnage: 500**

**Frame Sizes:  
2290, 3470**

## TECHNICAL SPECIFICATIONS

©2017 Milacron LLC. All Rights Reserved.  
Pub Number: T4.1010.A.08.17

4165 Half Acre Rd.,  
Batavia OH 45103  
513.536.2000  
info@milacron.com  
www.milacron.com