



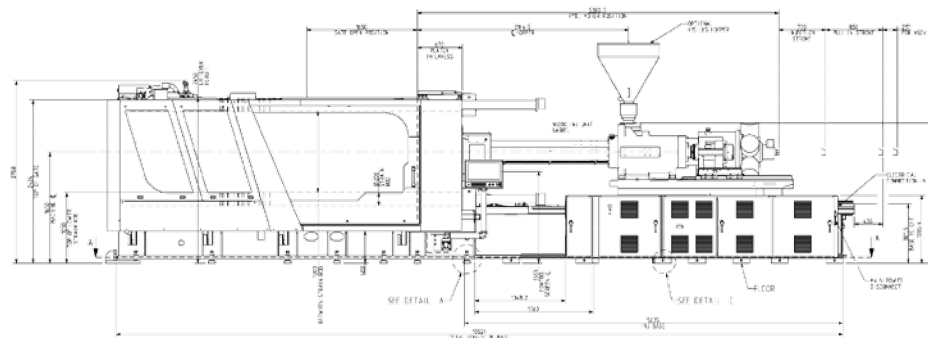
MAXIMA

PERFORMANCE SERIES

Tonnage: 1100

Frame Sizes: 10100, 16000

TECHNICAL SPECIFICATIONS



	ENGLISH METRIC	10100 Frame			16000 Frame	
		A'	A	B	A	B
General						
Electrical Motor	hp kW	40 (54 HP) / 80 (107 HP) / 40 (54 HP) 40 (19 kW) / 80 (43 kW) / 40 (19 kW)			40 (54 HP) / 80 (107 HP) / 80 (107 HP) 40 (19 kW) / 80 (43 kW) / 80 (43 kW)	
Total Oil Capacity	gal L	240 908.5			300 1,136	
Water Supply (29°C Inlet Temp)	gal/min L/min	25 95			25 95	
Connected Load	FLI	249			289	
Overall Dimensions (L x W x H)	in mm	415 x 126 x 107 10,541 x 3,190 x 2,708			426 x 126 x 107 10,821 x 3,190 x 2,708	
Machine Weight (without oil)	lbs kg	121,841 55,266			129,403 58,695	
Injection Unit Specifications						
Injection Capacity, Maximum GPPS	oz gms	148 4,185	179 5,064	231 6,539	288 8,174	362 10,253
Theoretical Displacement	in ³ cm ³	268.3 4,398	324.7 5,321	419.3 6,872	524.2 8,590	657.5 10,775
Maximum Injection Pressure	psi bar	33,200 2,290	27,400 1,890	21,200 1,462	27,400 1,890	21,900 1,510
Injection Rate	in ³ /sec cm ³ /sec	40.7 667	49.2 807	63.6 1042	61.5 1,008	77.1 1,264
Injection Velocity	in/sec mm/sec	3.28 83.19			3.17 80.60	
Screw Stroke	in mm	22.0 560			27.6 700	
Back Pressure Limits	psi bar	500			500	
Low Torque Screw Speed Maximum	rpm	170	170	162	100	100
Low Torque at Screw	in-lb Nm	74,087 8,371			158,175 17,871	
	psi bar	2,450 169			2,450 169	
Plasticizing Rate (GPPS)	oz/sec gm/sec	4.8 137	6.1 172	8.2 234	5.0 143	6.8 192
High Torque Screw Speed Maximum	rpm	116			*	
High Torque at Screw	in-lb Nm	114,834 12,974			*	
	psi bar	2,450 169			*	
Plasticizing Rate (GPPS)	oz/sec gm/sec	3.1 89	3.9 112	5.6 158	*	*

Notes

- 1) All machine dimensions and specifications are subject to change. Values are for reference only. All general assembly drawings or visuals included herein are for reference only. Please consult the general assembly drawing from a Milacron representative.
- 2) * 16000 Injection Unit - Standard single displacement extruder motor
- 3) ** Limit of 1/2 the max mold weight per platen

©2017 Milacron LLC. All Rights Reserved.
Pub Number: T4.1061.A.10.17

4165 Half Acre Rd.,
Batavia OH 45103
513.536.2000
info@milacron.com
www.milacron.com

		10100 Frame			16000 Frame	
	ENGLISH METRIC	A'	A	B	A	B
Injection Unit Specifications (continued)						
Screw Diameter	in mm	3.94 100	4.33 110	4.92 125	4.92 125	5.51 140
Screw L/D Ratio	L/D	23.9	21.7	19	21.3	19
Number of Pyrometers (Barrel/Nozzle)	qty	4/1			4/1	
Total Heat Capacity	kW	53.0			60.3	
Clamp						
Clamping Force	ton kN	1,124 10,000			1,124 10,000	
Opening Force	ton kN	45 400			45 400	
Clamp Stroke	in mm	74.8 1,900			74.8 1,900	
Clamp Close Velocity	in/sec mm/sec	47.13 1,197.06			47.13 1,197.06	
Clamp Open Velocity	in/sec mm/sec	49.05 1,245.92			49.05 1,245.92	
Eject Force (forward)	tons kN	21.4 190			21.4 190	
Eject Velocity (forward)	in/sec mm/sec	7.66 194.68			7.66 194.68	
Eject Velocity (retract)	in/sec mm/sec	11.17 283.62			11.17 283.62	
Ejector Stroke	in mm	11.81 300			11.81 300	
Mold Protect Pressure	psi bar	1,500			1,500	
Maximum Daylight	in mm	94.49 2,400			94.49 2,400	
Extended Daylight (Option)	in mm	106.3 2,700			106.3 2,700	
Minimum Mold Height	in mm	19.7 500			19.7 500	
Maximum Mold Height	in mm	47.2 1,200			47.2 1,200	
Maximum Mold Weight	lbs kg	52,760** 23,930			52,760** 23,930	
Platen Size (H x V)	in mm	79.1 x 65.4 2,010 x 1,660			79.1 x 65.4 2,010 x 1,660	
Distance Between Tie Rods	in mm	61.0 x 47.2 1,550 x 1,220			61.0 x 47.2 1,550 x 1,220	
Tie Rod Diameter	in mm	7.87 200			7.87 200	
Eject and CP	g/min l/min	40 / 21 151 / 79			40 / 21 151 / 79	
Dry Cycle Time (Euromap 6)	sec	4.52 w/o eject-on-the-fly			4.52 w/o eject-on-the-fly	
Diagonal Tiebar Distance	in mm	80 2,041			80 2,041	
Rotary Turn Table Recommended		Varian 1800 mm			Varian 1800 mm	



MAXIMA

PERFORMANCE SERIES

Tonnage: 1100

**Frame Sizes:
10100, 16000**

TECHNICAL SPECIFICATIONS

©2017 Milacron LLC. All Rights Reserved.
Pub Number: T4.1061.A.10.17

4165 Half Acre Rd.,
Batavia OH 45103
513.536.2000
info@milacron.com
www.milacron.com