



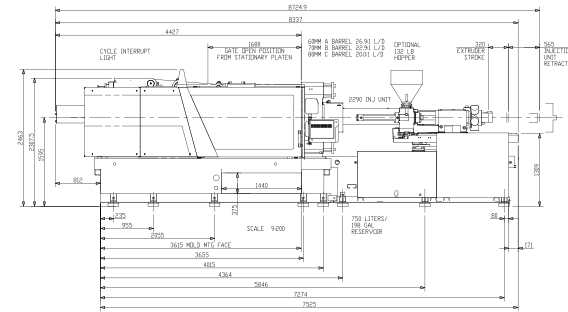
MAGNA

TOGGLE SERIES

Tonnage: 500 (3-Motor)

Frame Sizes:
2290, 3470

TECHNICAL SPECIFICATIONS



	ENGLISH METRIC	2290 Frame			3470 Frame		
		A	B	C	A	B	C
General							
Electrical Motor	hp kW		49 36.6			49 36.6	
Total Oil Capacity	gal L		198 750			198 750	
Water Supply (29°C Inlet Temp)	gal/min L/min		26.4 100			26.4 100	
Connected Load	kW		76.2			94.5	
FLI / FLA (Full Load Amps) ²	Amps		161			184	
Main Circuit Breaker ²	Amps		250			300	
Overall Dimensions (L x W x H)	ft m		29.1 x 9.8 x 8.5 8.9 x 2.4 x 2.5			31.1 x 9.8 x 8.5 9.5 x 2.4 x 2.6	
Machine Weight	lbs kg		59,524 27,000			61,729 28,000	
Injection Unit Specifications							
Injection Capacity, Maximum GPPS	oz gms	30.4 861	41.3 1,172	54 1,530	46.5 1,318	60.7 1,722	76.9 2,179
Theoretical Displacement	in ³ cm ³	55.2 905	75.2 1,232	98.1 1,608	84.5 1,385	110.4 1,810	139.7 2,290
Maximum Injection Pressure	psi bar	32,459 2,238	26,909 1,856	20,609 1,421	33,199 2,289	27,803 1,917	21,973 1,515
Injection Rate	in ³ /sec cm ³ /sec	22.3 367	30.5 500	39.8 653	22.6 371	29.5 484	37.4 613
Injection Velocity	in/sec mm/sec		5.1 130			3.8 97	
Screw Stroke	in mm		12.5 320			14.1 360	
Back Pressure Limits	psi bar		500 34.4			500 34.4	
Screw Diameter	in mm	2.36 60	2.76 70	3.15 80	2.76 70	3.15 80	3.54 90
Screw L/D Ratio	L/D	26.7	22.9	20	25.7	22.5	21
Screw Speed	rpm		255			199	
Screw Torque @172 bar	in-lb Nm		29,623 3,347			37,978 4,291	
Plasticizing Rate (GPPS)	oz/sec gm/sec	2.0 59	3.2 93	4.4 126	2.5 73	3.4 99	4.4 125

©2017 Milacron LLC. All Rights Reserved.
Pub Number: T4.1010.A.02.18

4165 Half Acre Rd.,
Batavia OH 45103
513.536.2000
info@milacron.com
www.milacron.com

		2290 Frame			3470 Frame		
	ENGLISH METRIC	A	B	C	A	B	C
Injection Unit Specifications (continued)							
Number of Pyrometers (Barrel/Nozzle)	qty	4/1			4/1		
Total Heat Capacity	kW	39.6			57.9		
Clamp							
Clamping Force	ton kN	505 4,500			505 4,500		
Opening Force	ton kN	45.1 450			45.1 450		
Clamp Stroke	in mm	32.2 820			32.2 820		
Clamp Close Velocity	in/sec cm/sec	27.5 700			27.5 700		
Clamp Open Velocity	in/sec cm/sec	19.6 500			19.6 500		
Eject Force (forward)	tons kN	11.9 117			11.9 117		
Eject Velocity (forward)	in/sec cm/sec	4.92 125			4.92 125		
Eject Velocity (retract)	in/sec cm/sec	8.27 210			8.27 210		
Ejector Stroke	in mm	7.9 200			7.9 200		
Mold Protect Pressure	psi bar	986 68			986 68		
Maximum Daylight	in mm	64.6 1,640			64.6 1,640		
Minimum Mold Height	in mm	13.8 350			13.8 350		
Maximum Mold Height	in mm	32.3 820			32.3 820		
Maximum Mold Weight	lbs kg	12,621 5,725			12,621 5,725		
Platen Size (H x V)	in mm	47.2 x 47.2 1,200 x 1,200			47.2 x 47.2 1,200 x 1,200		
Distance Between Tie Rods	in mm	32.7 x 32.7 830 x 830			32.7 x 32.7 830 x 830		
Tie Rod Diameter	in mm	5.9 150			5.9 150		
Dry Cycle Time (Euromap 6)	sec	3.48			3.48		

Notes

1) All machine dimensions and specifications are subject to change. Values are for reference only. All general assembly drawings or visuals included herein are for reference only. Please consult the general assembly drawing from a Milacron representative.

2) These values are for standard machine horsepower and voltage (460v/3ph/60Hz) with no additional options.



MAGNA

TOGGLE SERIES

Tonnage: 500

**Frame Sizes:
2290, 3470**

TECHNICAL SPECIFICATIONS

©2017 Milacron LLC. All Rights Reserved.
Pub Number: T4.1010.A.02.18

4165 Half Acre Rd.,
Batavia OH 45103
513.536.2000
info@milacron.com
www.milacron.com